

severe monotraumas

... my personal experiences



**PD Dr. med. Dominik
Heim, Switzerland**

please, come to the theatre ...





... the anaesthesiologist is waiting to serve us!

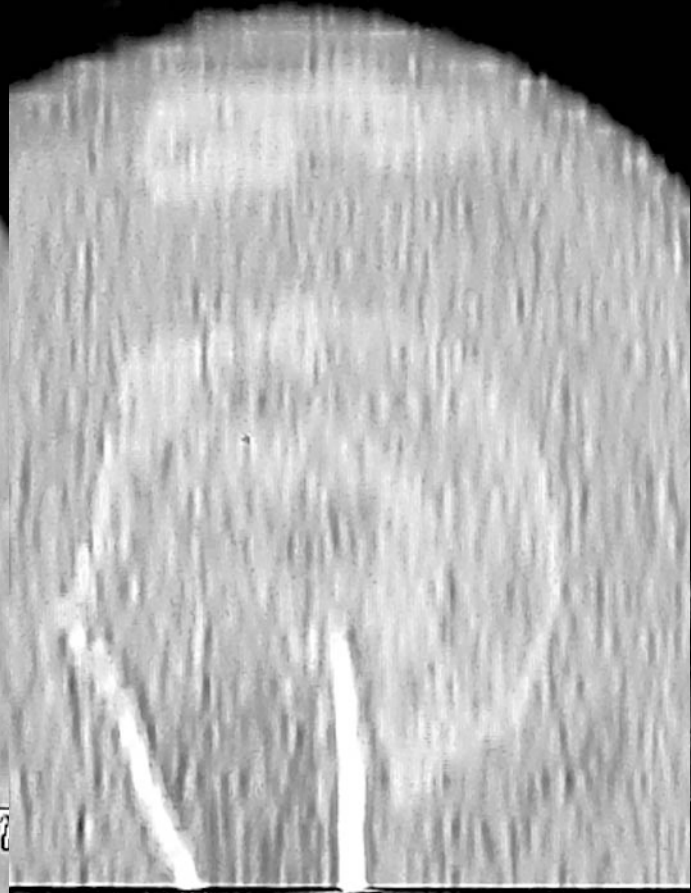


B.L. female 61 y
skiaccident 2004

120[kV] 190[
750[m
3.00
-6.00[mm/:



CINE, 17



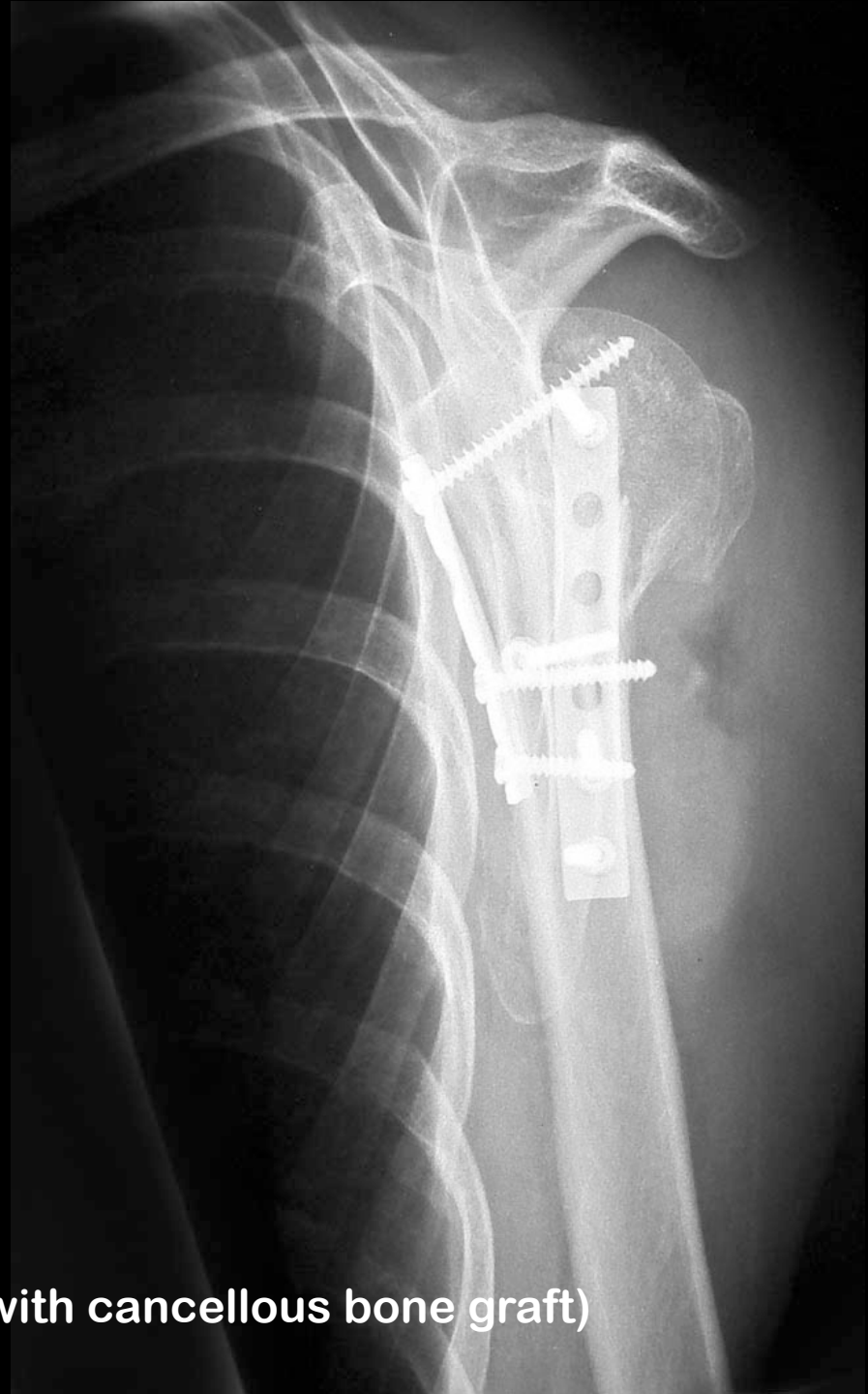
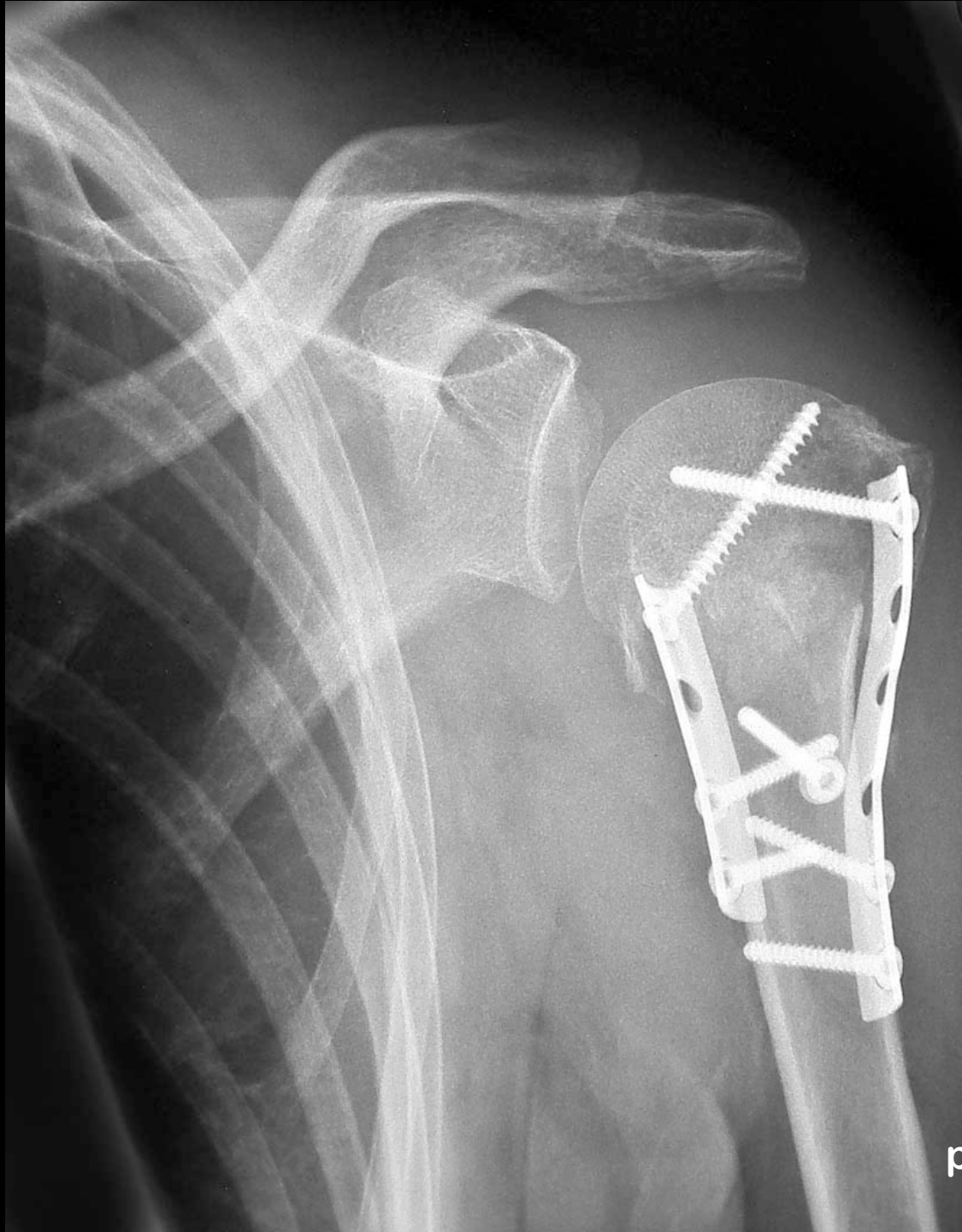
120
0.00
(386,257)



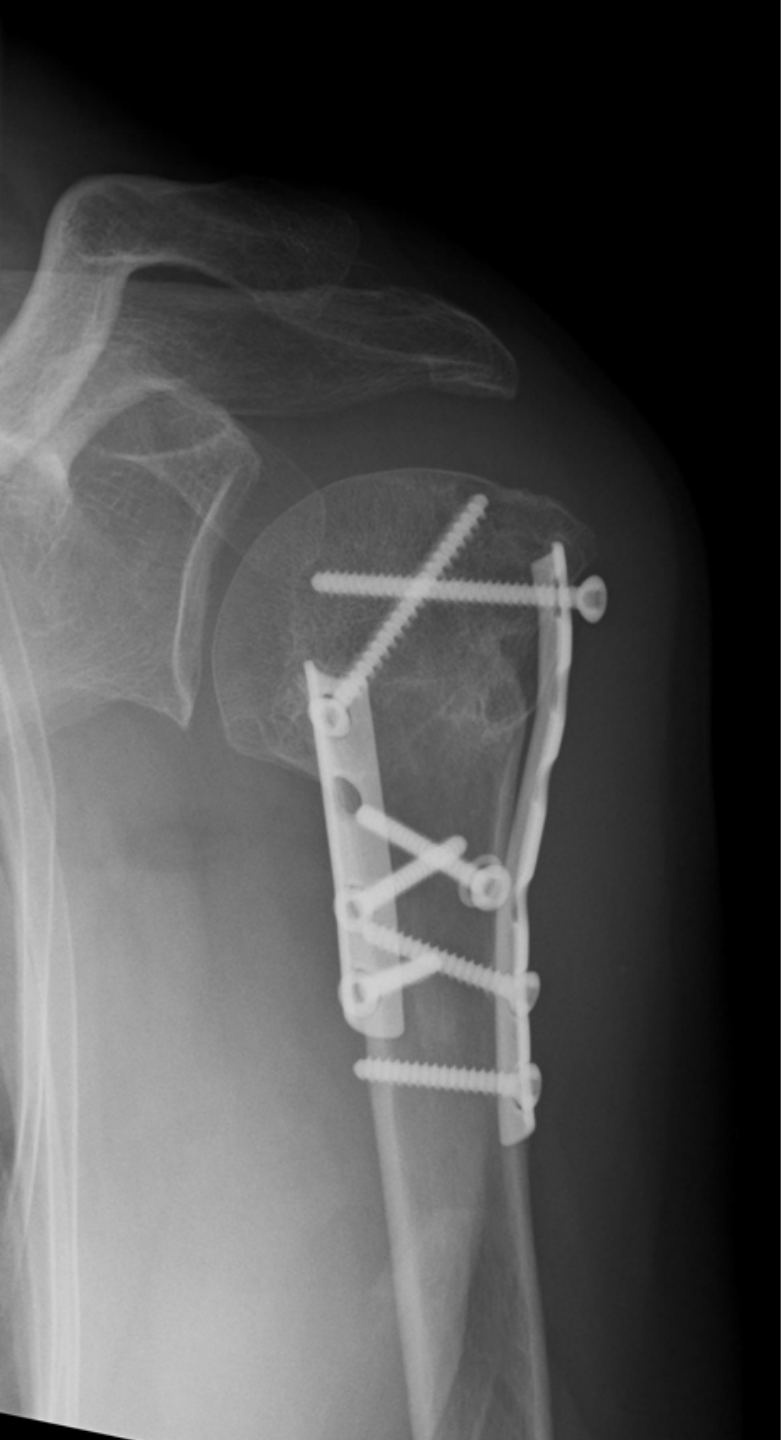
R
W-500
WW-2500

Asteion P

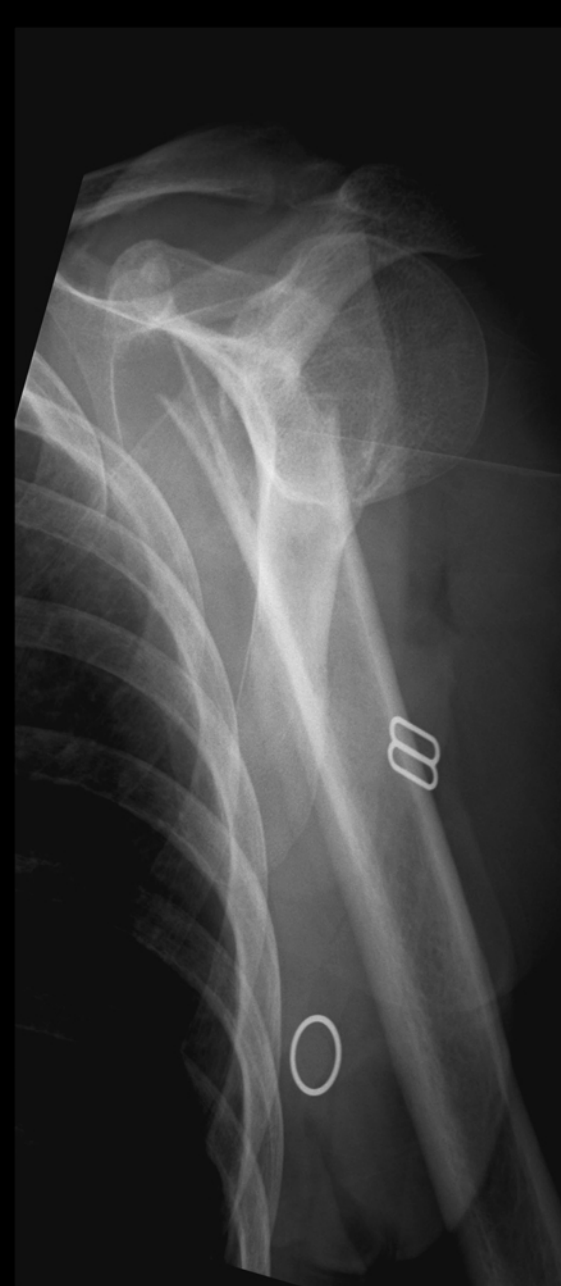
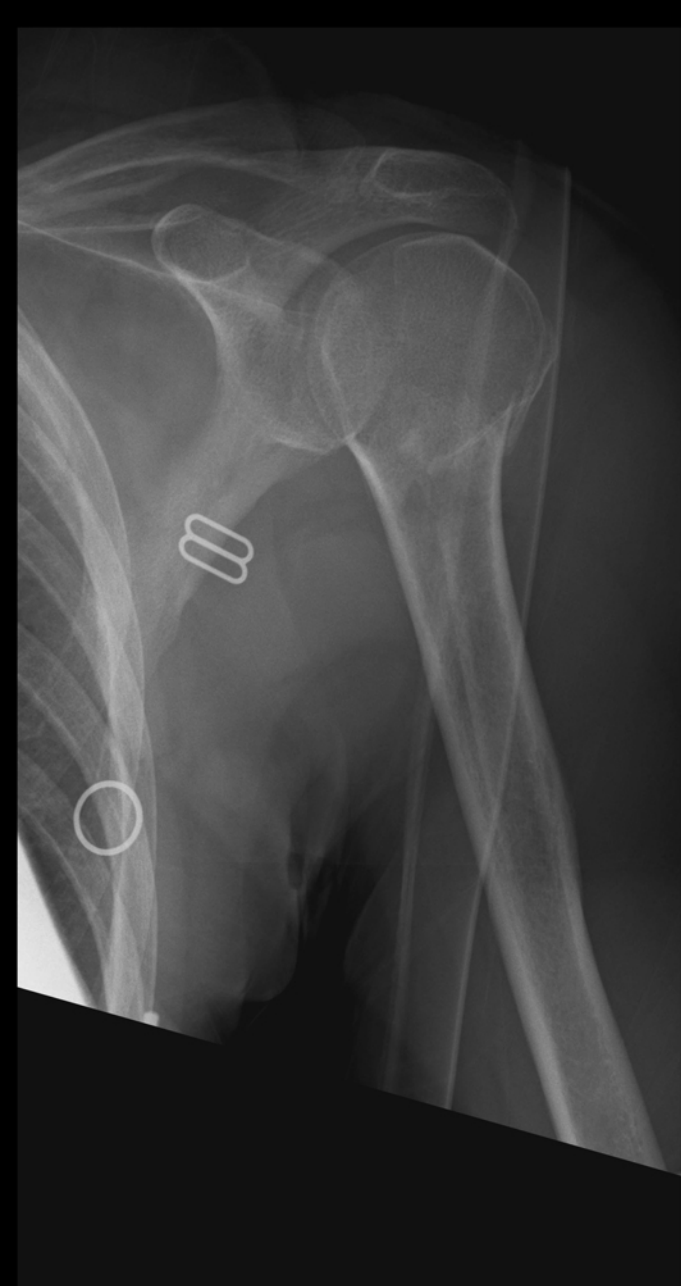
INT
spita



postop (with cancellous bone graft)

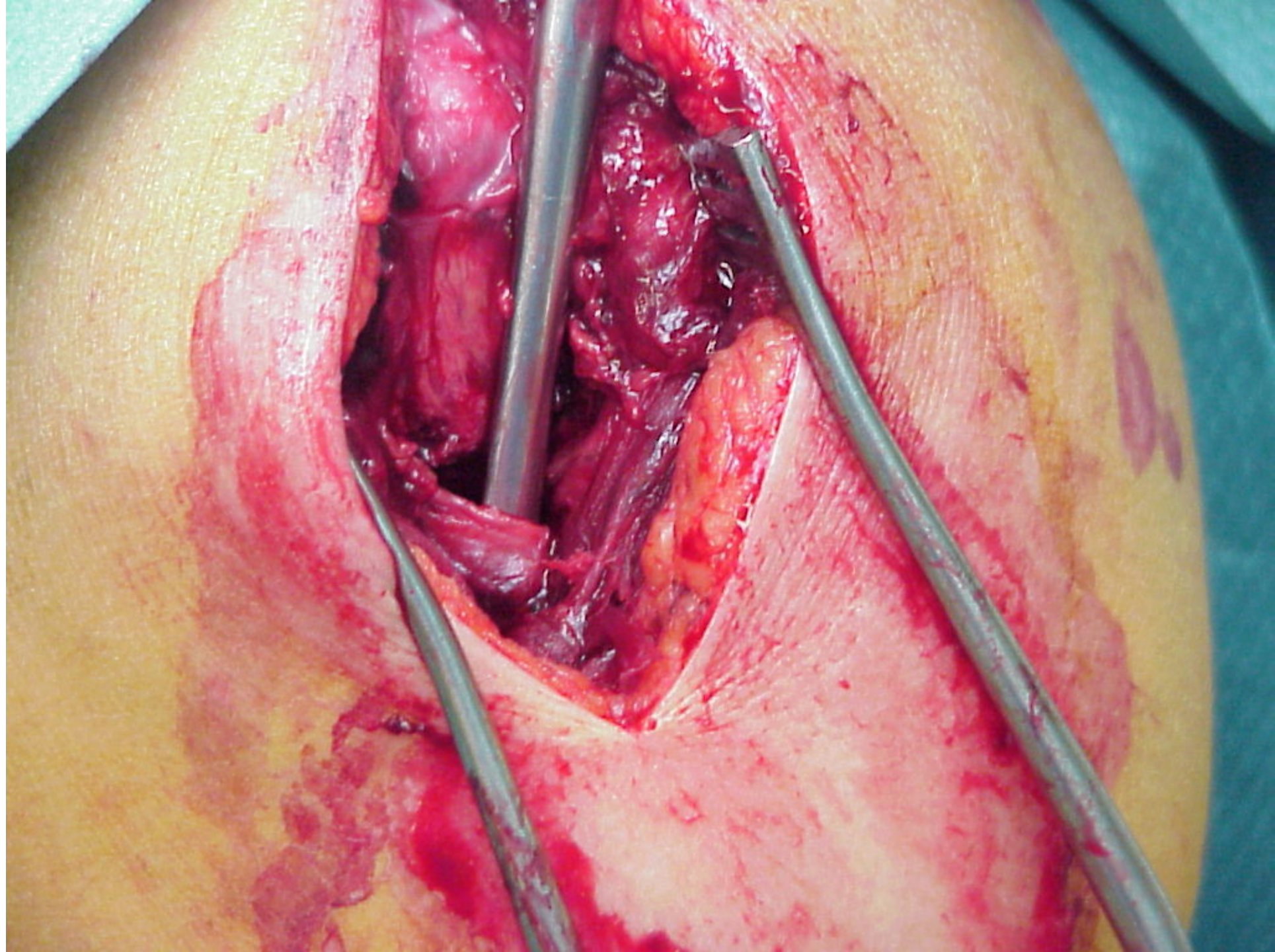


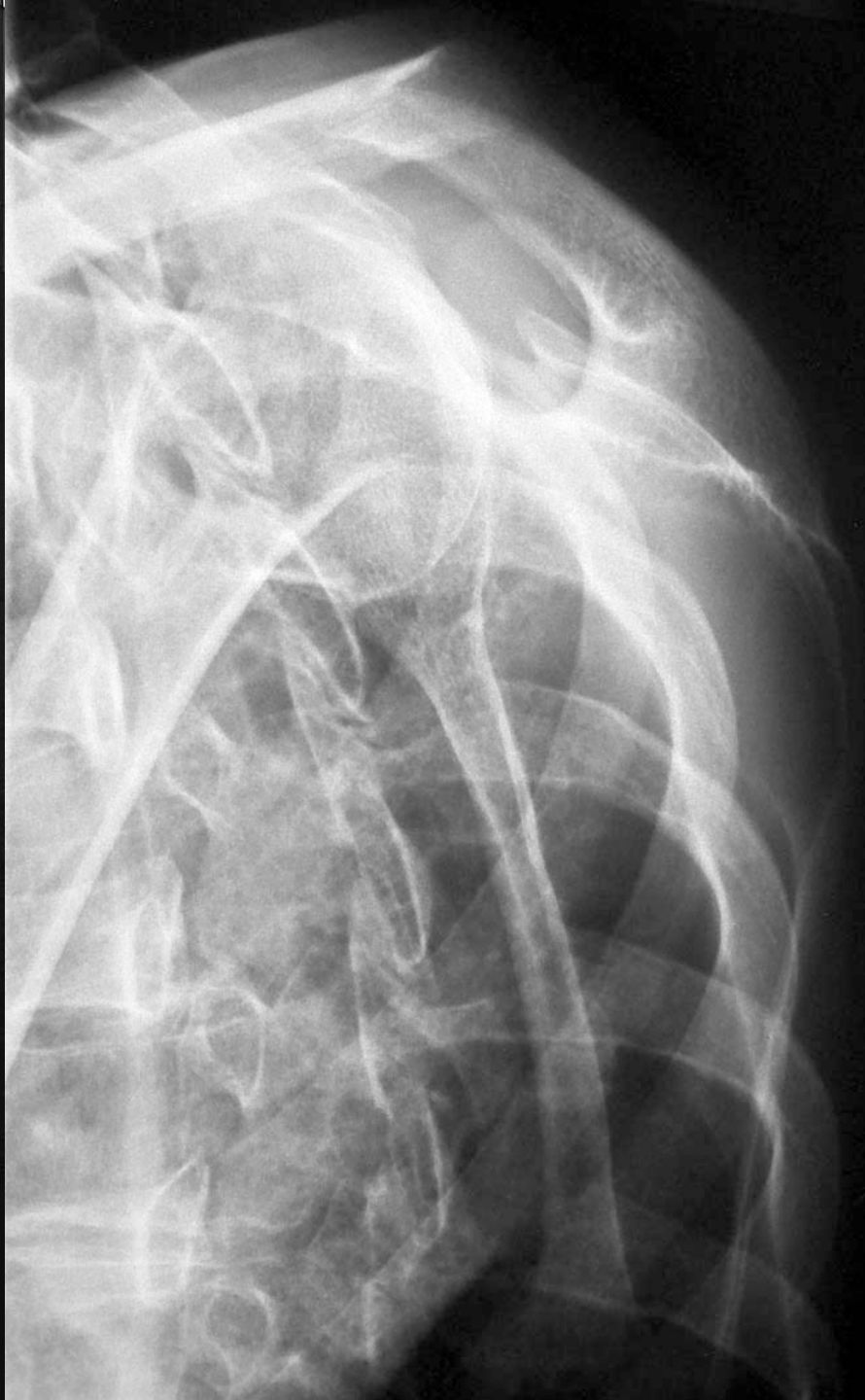




M.L. 65y, female, skiaccident 2008







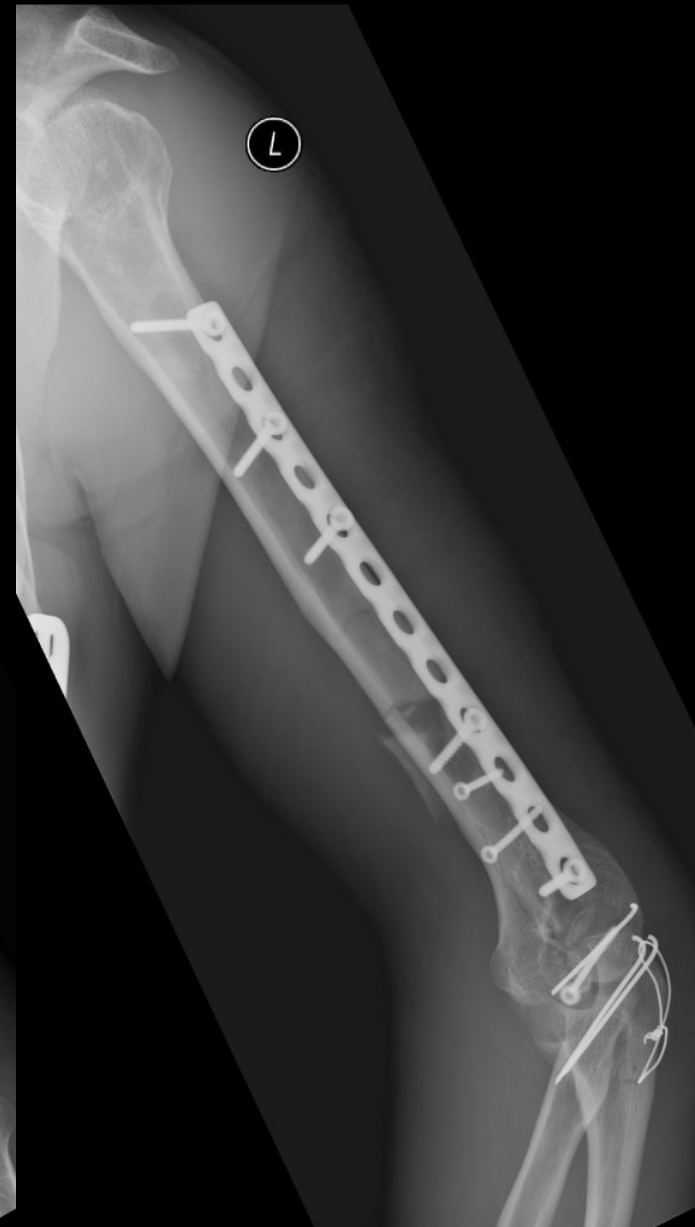
K.D. female, 51 y, skiaccident



5 mt



8 y



Oe. S. male, 34y, snowboard



1 year





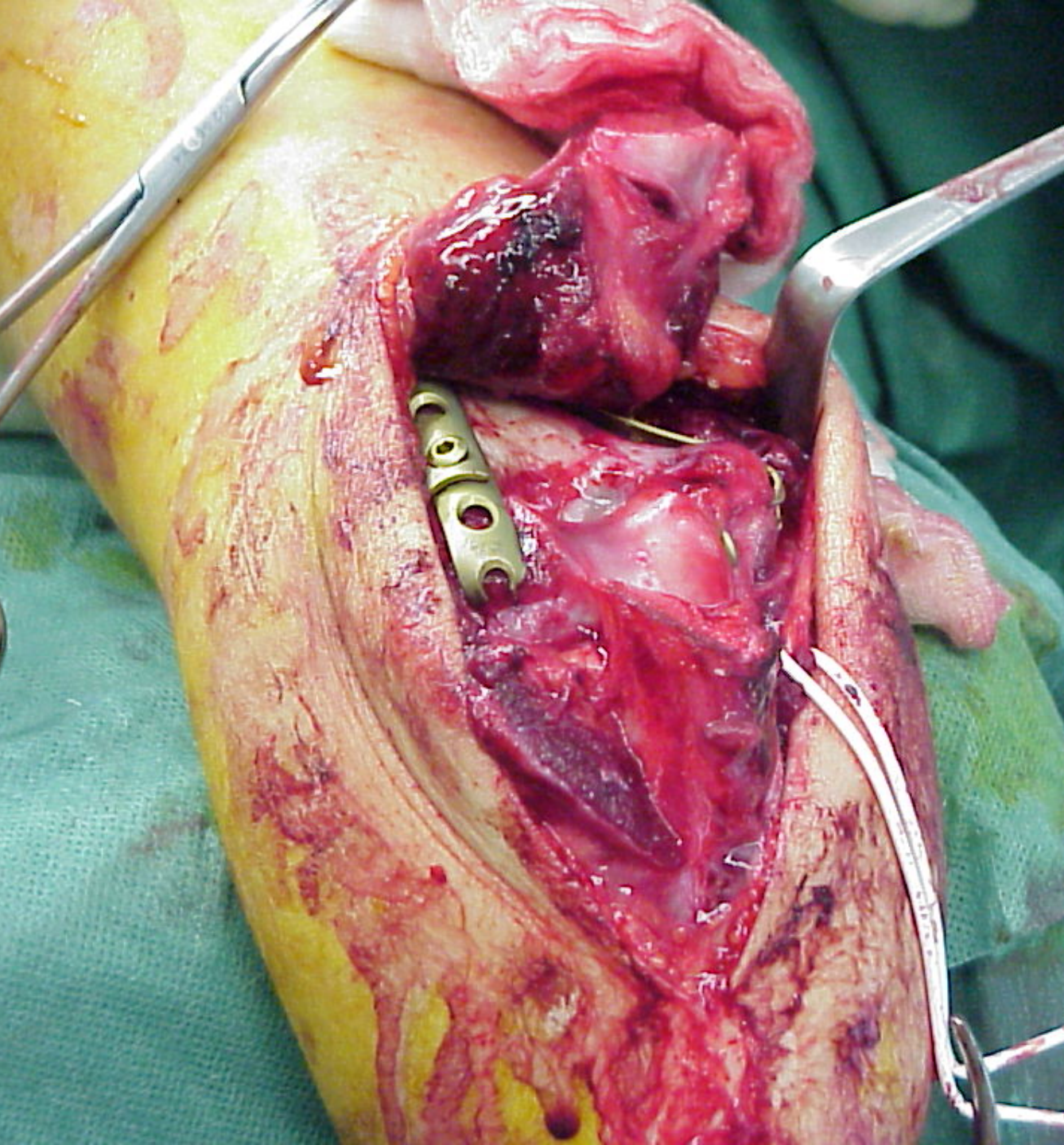
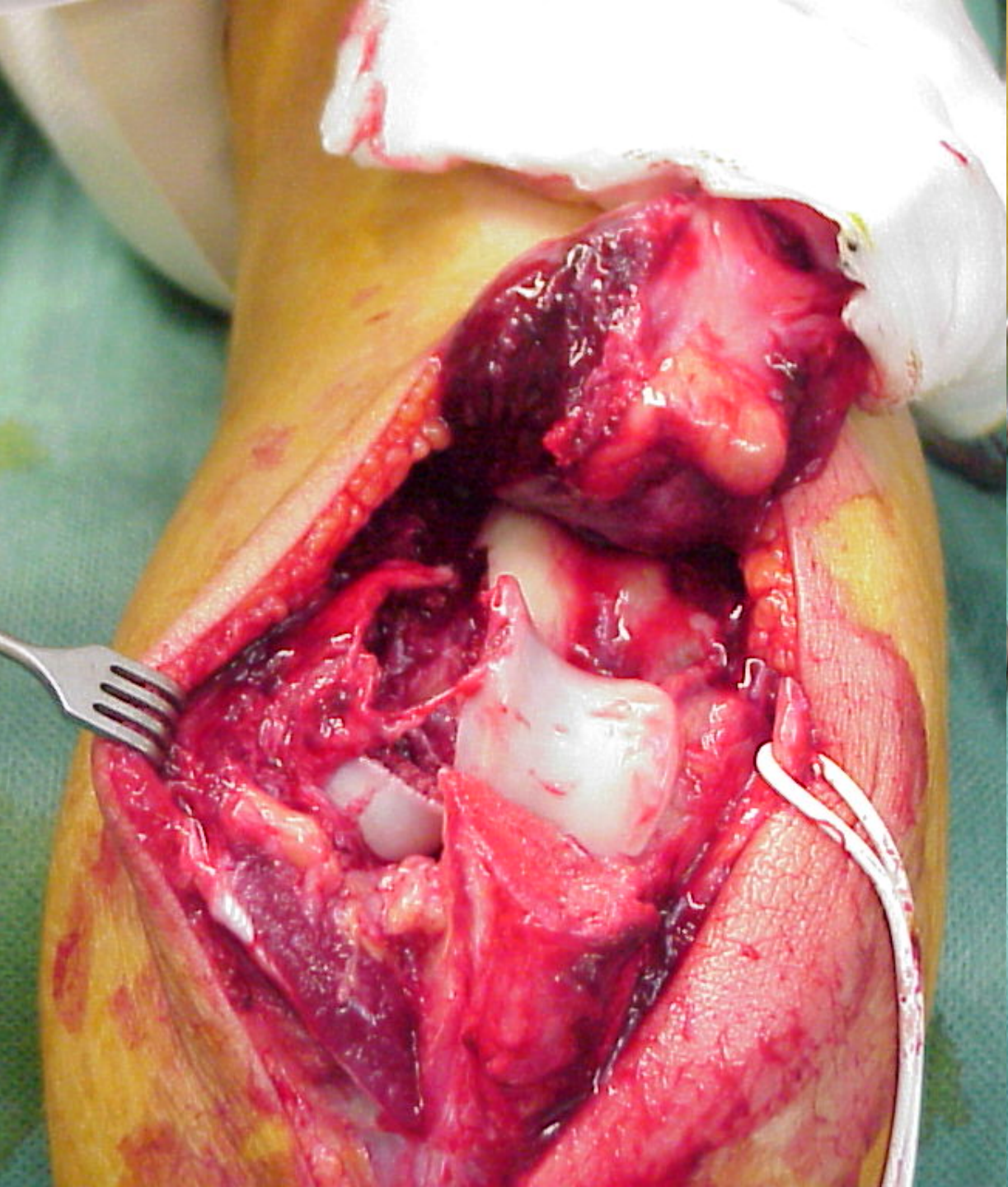


L
liegend
erschwerte
Aufnahme

B.C, 27y, female,
skiaccident



L
liegend







1 year

G.P 62, male, skiaccident



52, 3 mAs

UNIV. Handgelenk für --
Operator:

Date 13.03.2012 [11:58:2
Institution Dr. König, Adelbod

42
DELBODEN



13.03

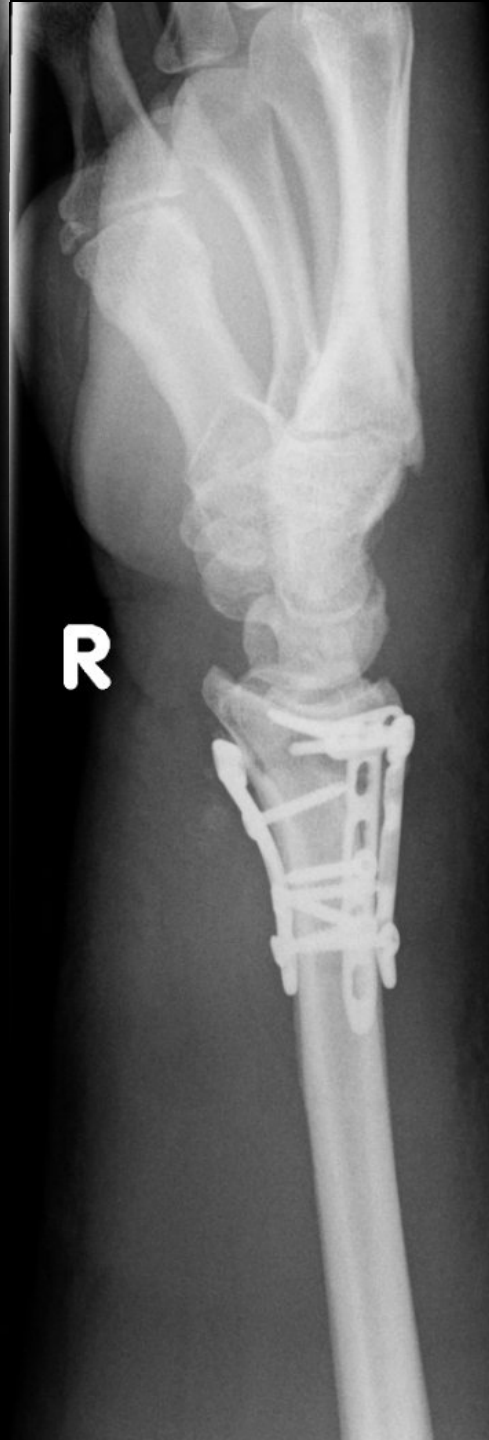
UNIV. Handgelenk für --
Operator:

Date 13.03.2012 [11:58:2
Institution Dr. König, Adelbod



postop I

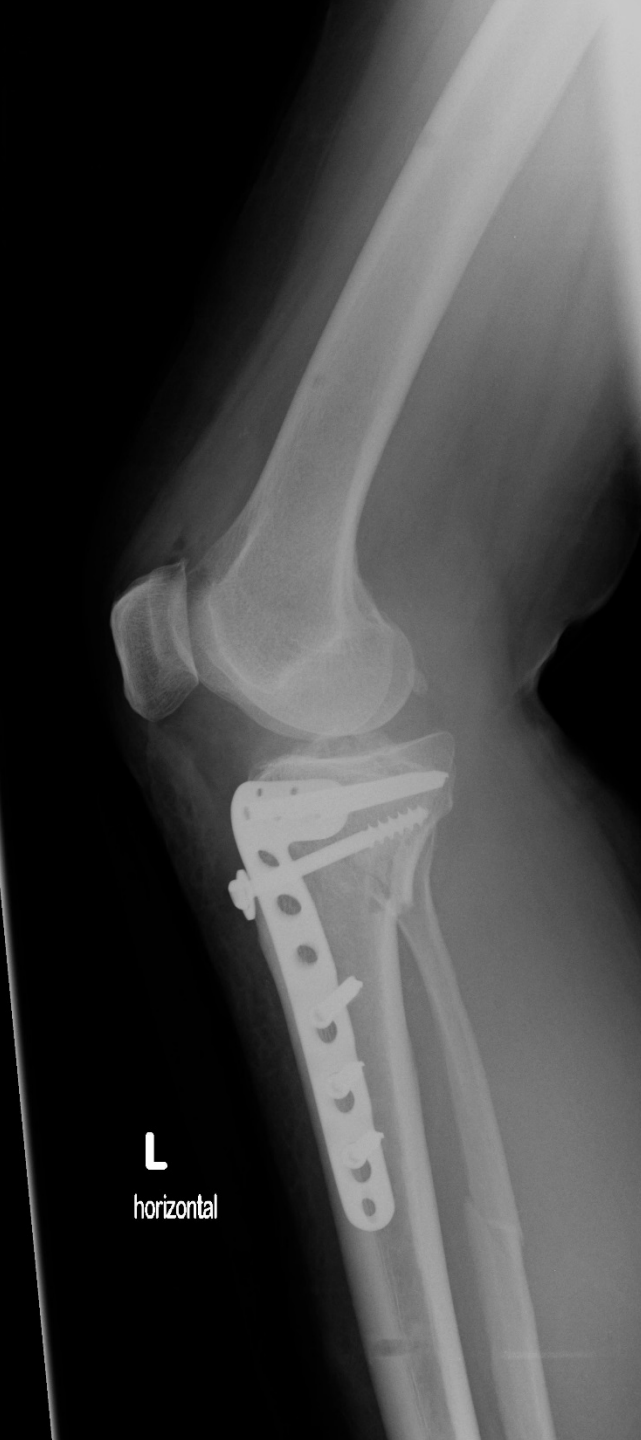








L
horizontal
A.M, 54y, female,
skiaccident



L
horizontal



postop

LOW_EXM

Acq Tm: 13.21.41.875

legend

LOW_EXM

horizontal

lat-med.

Acq Tm: 13.18.09.000

Acq Tm



F.S., 50y,
female,
skiaccident

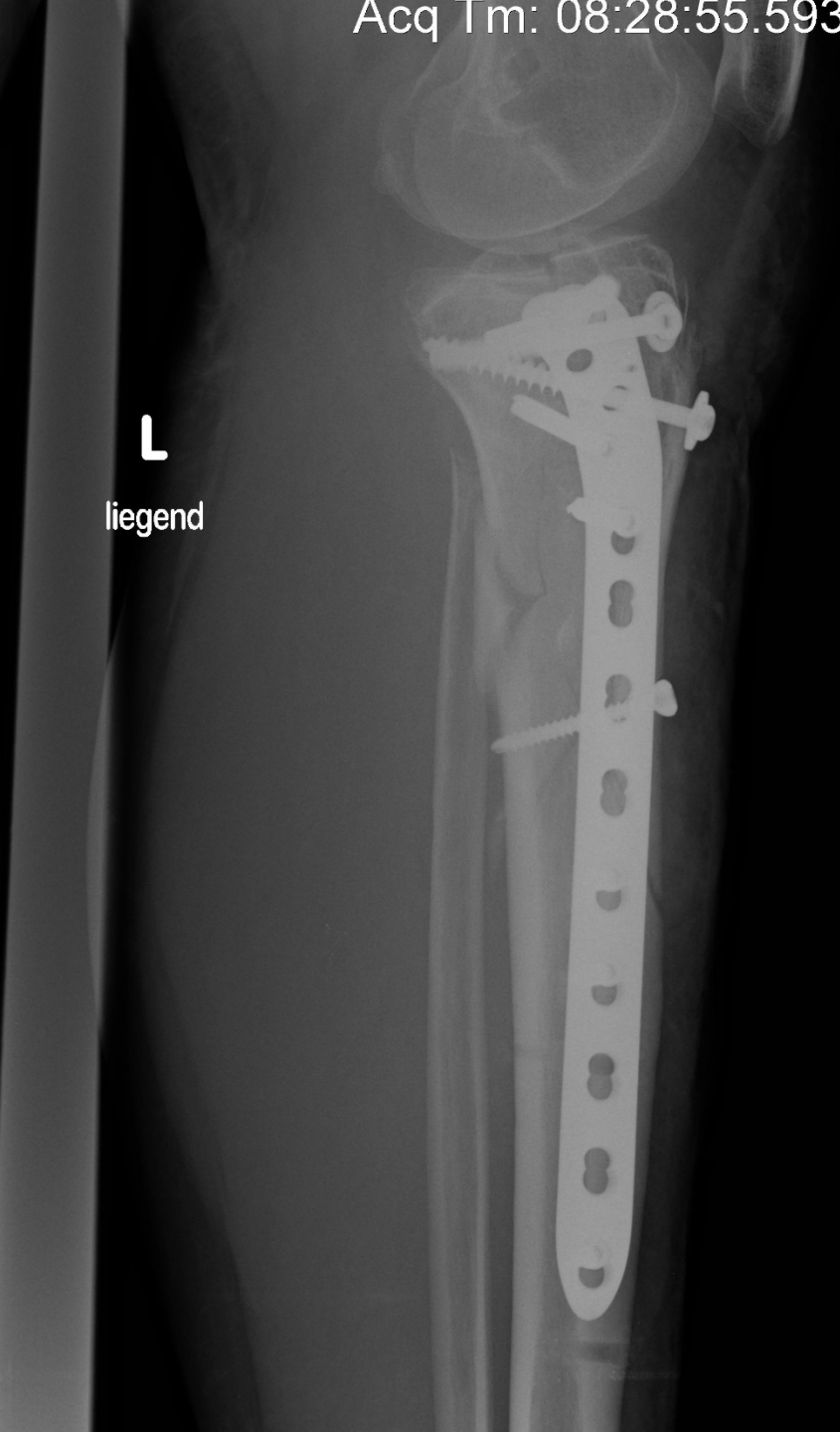


**Swelling
!!!**

LOW_EXM



L
legend



postop II

K.T. 44y,
female,
skiaccident

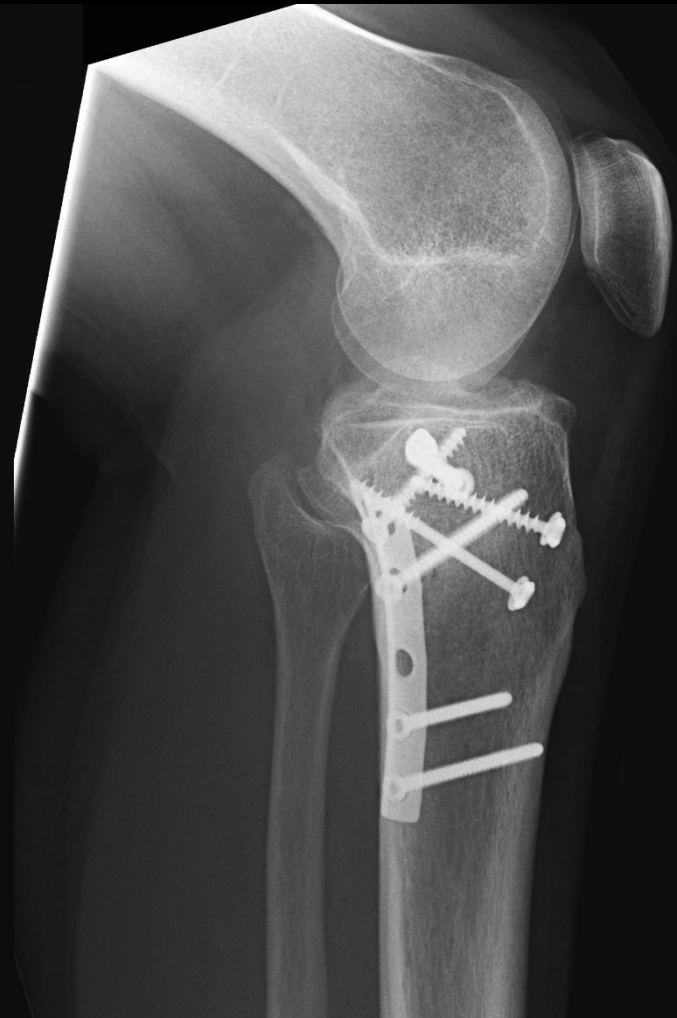
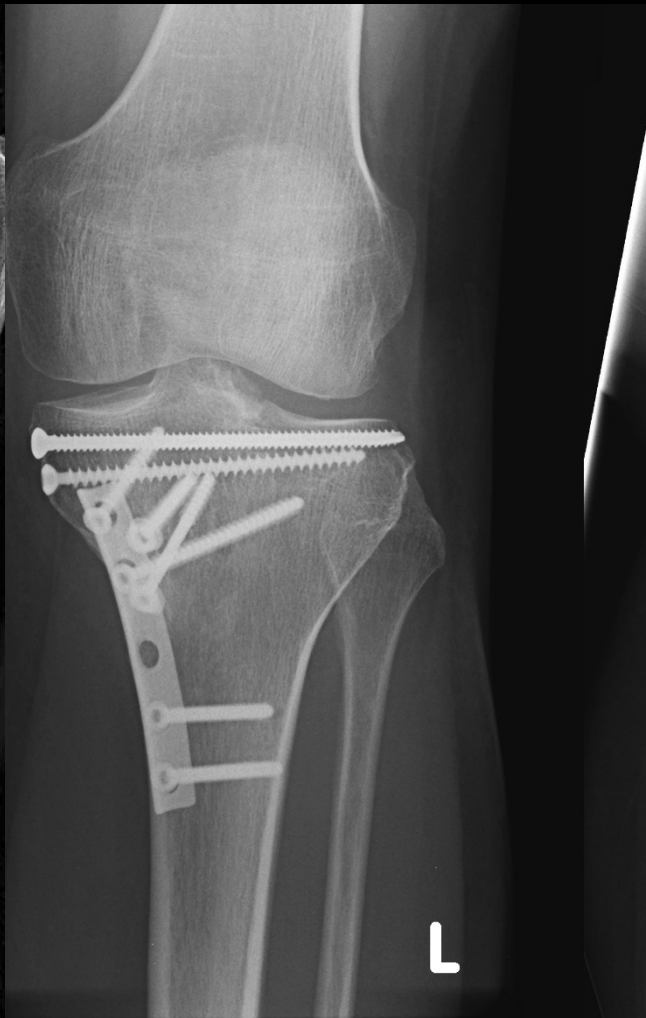


note the
eminentia



uninjured leg

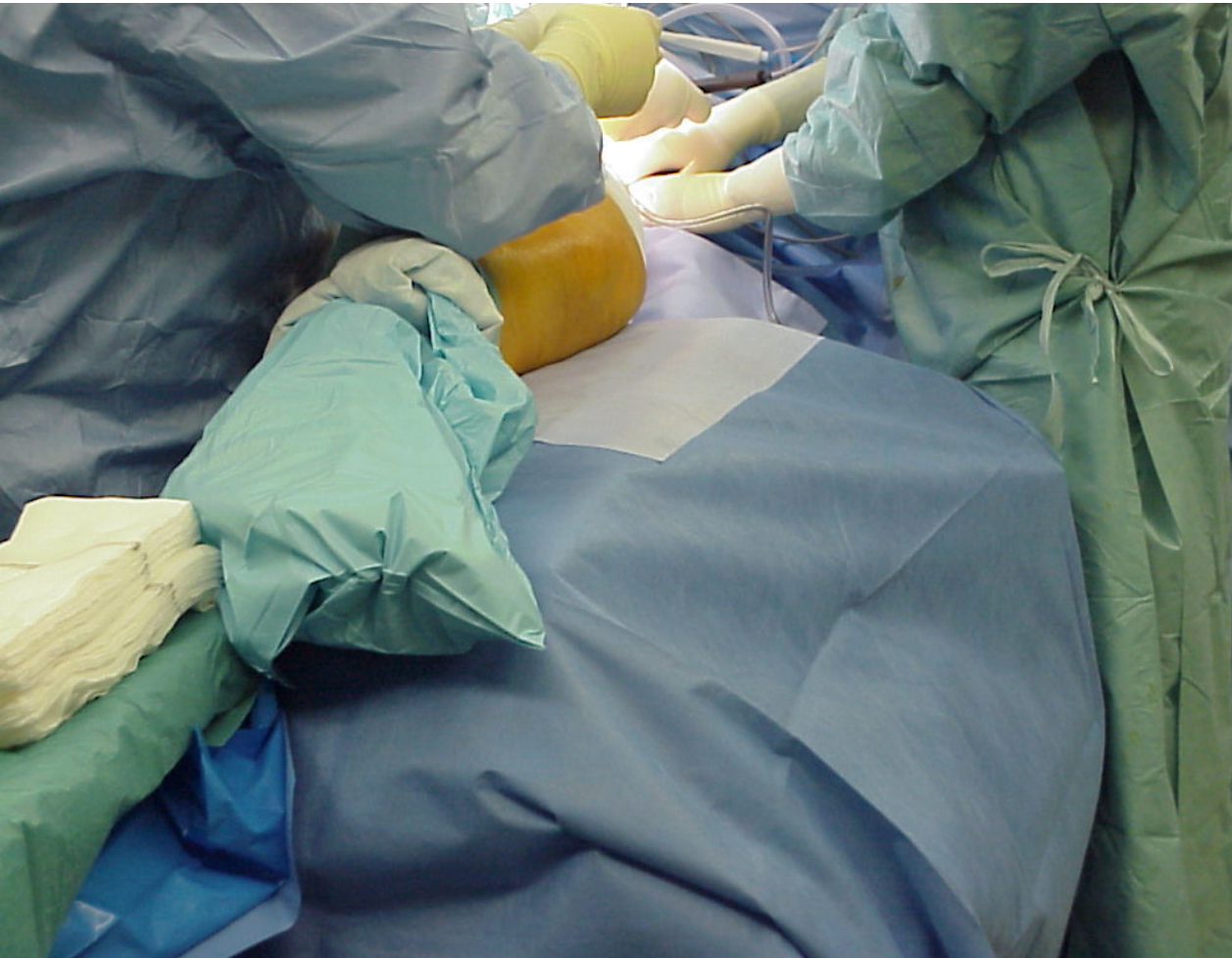
Positioning for medial approach (another patient)



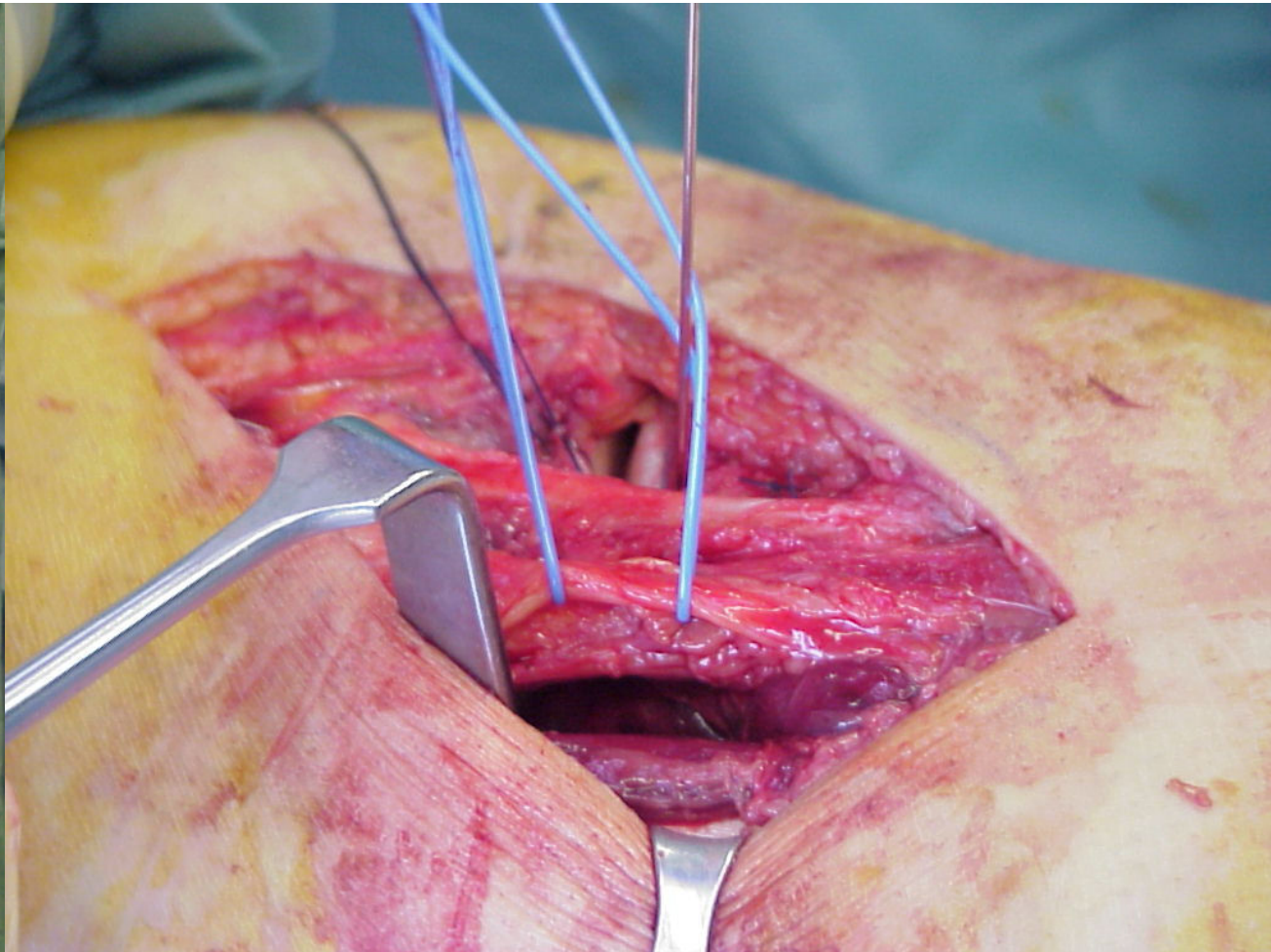
postop

1 year





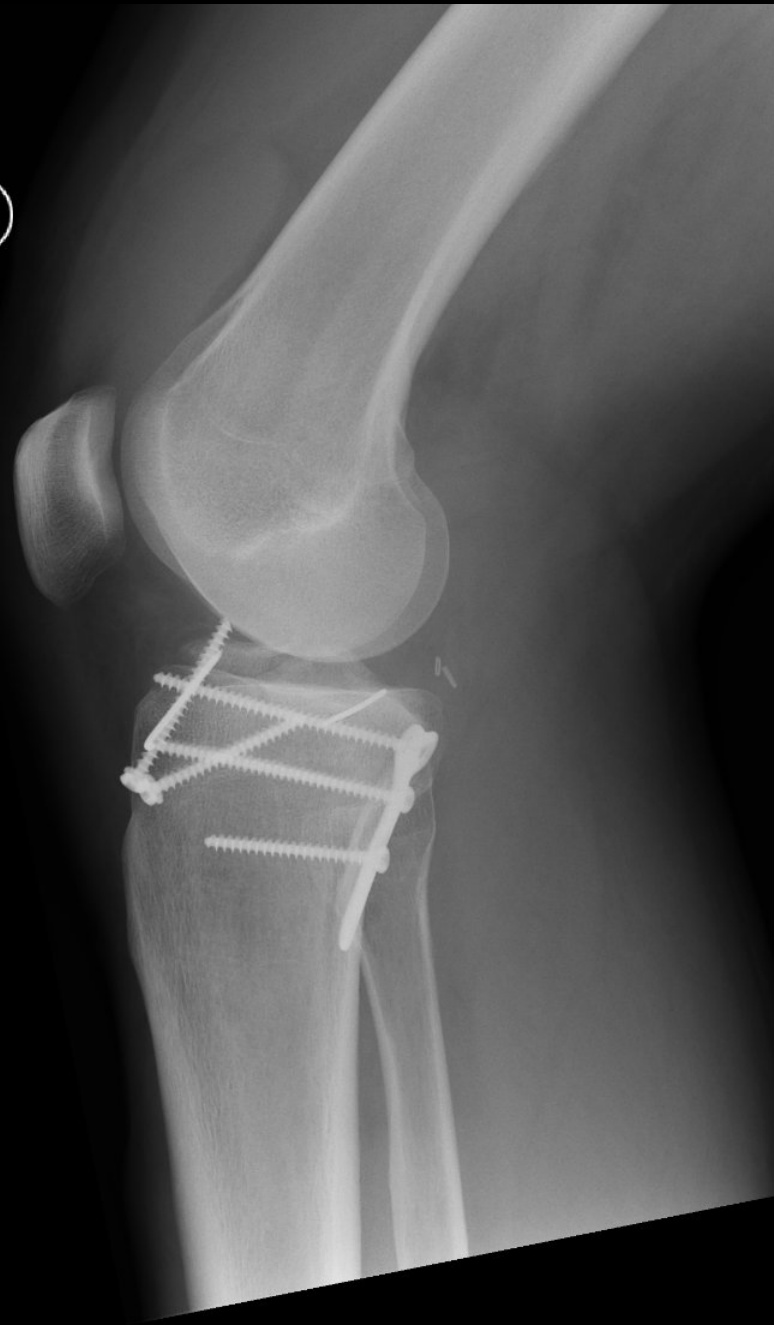
lateral decubitus



n. peronaeus



R



R

R

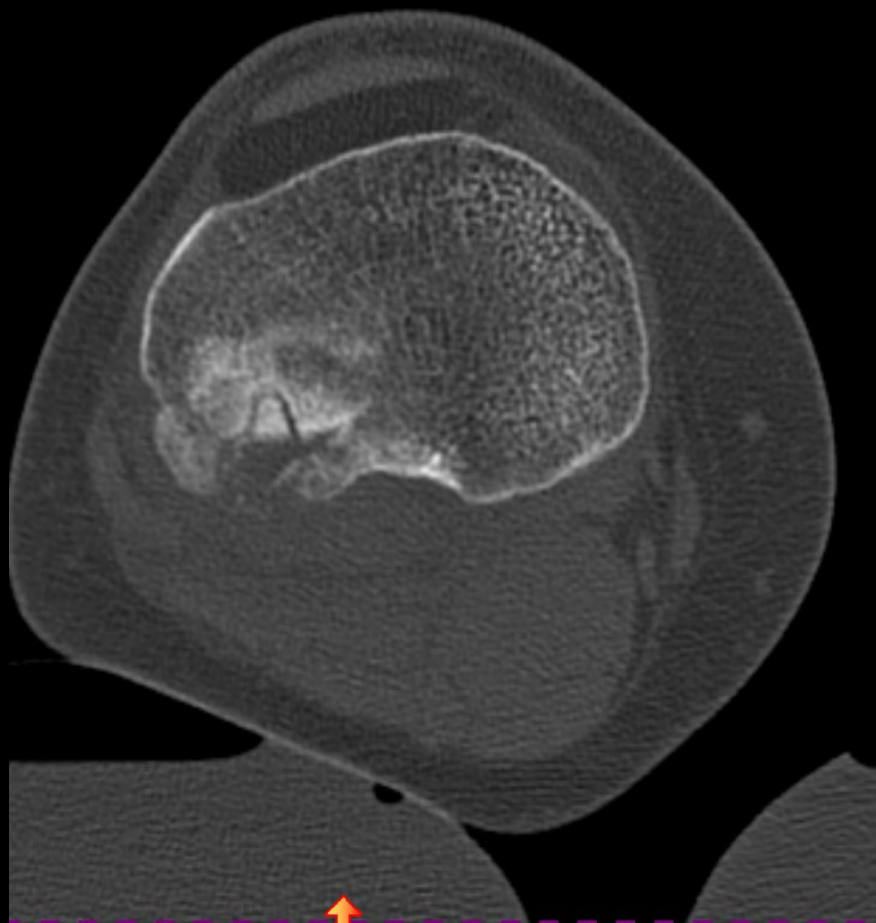


n



12 mm

M.M. 36y, female,
skiaccident



(R)

12 mm
┌
├
├
├
├
└

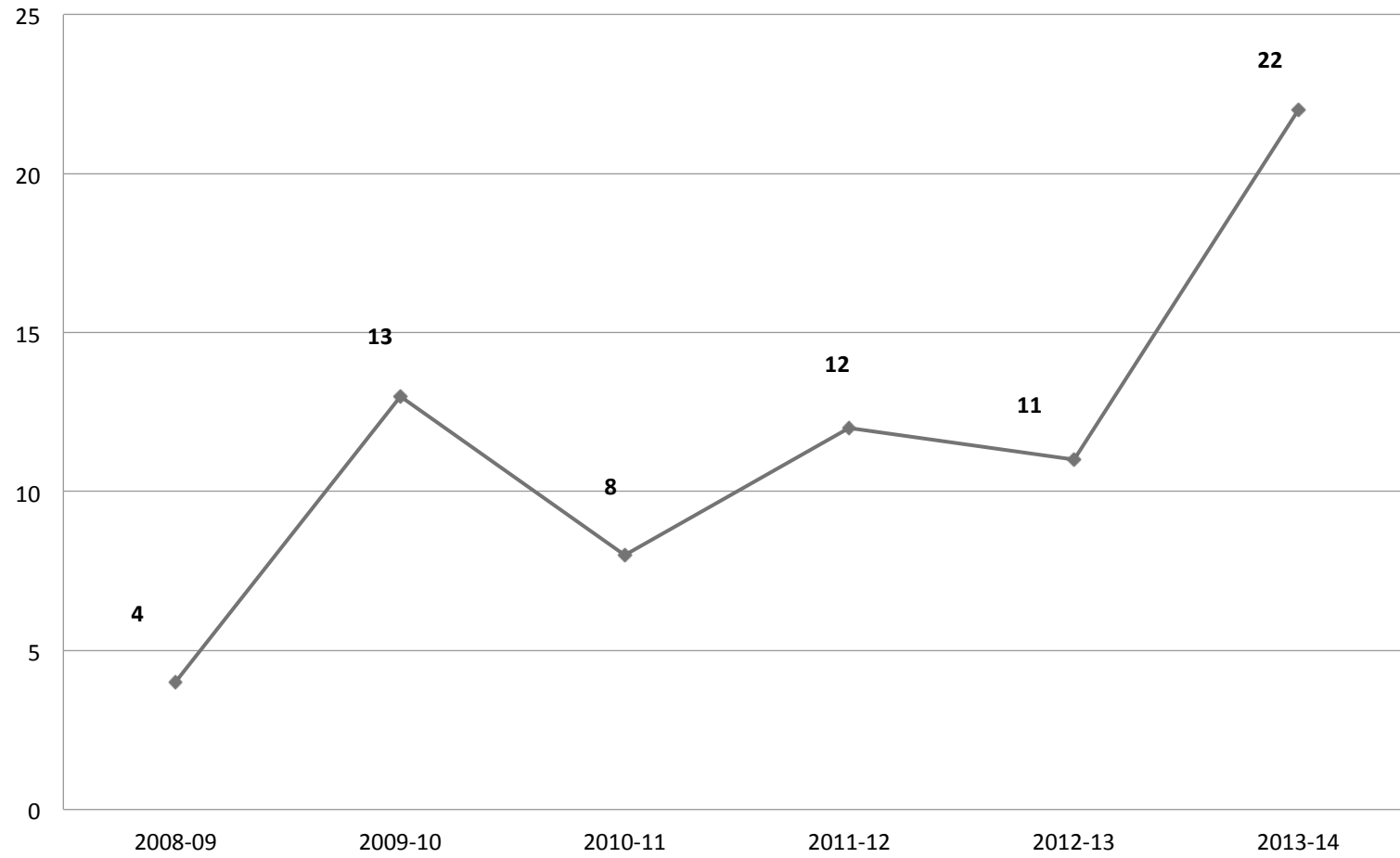


(R)

12 mm
┌
├
├
├
├
└



tibiaplateau-fractures hospital of Frutigen (500 patients/ winter



Outcome:

„The majority of patients could not return to their previous level of activity. Overall 93% of the patients returned to sports, but we noticed a post-injury shift towards activities with less impact“

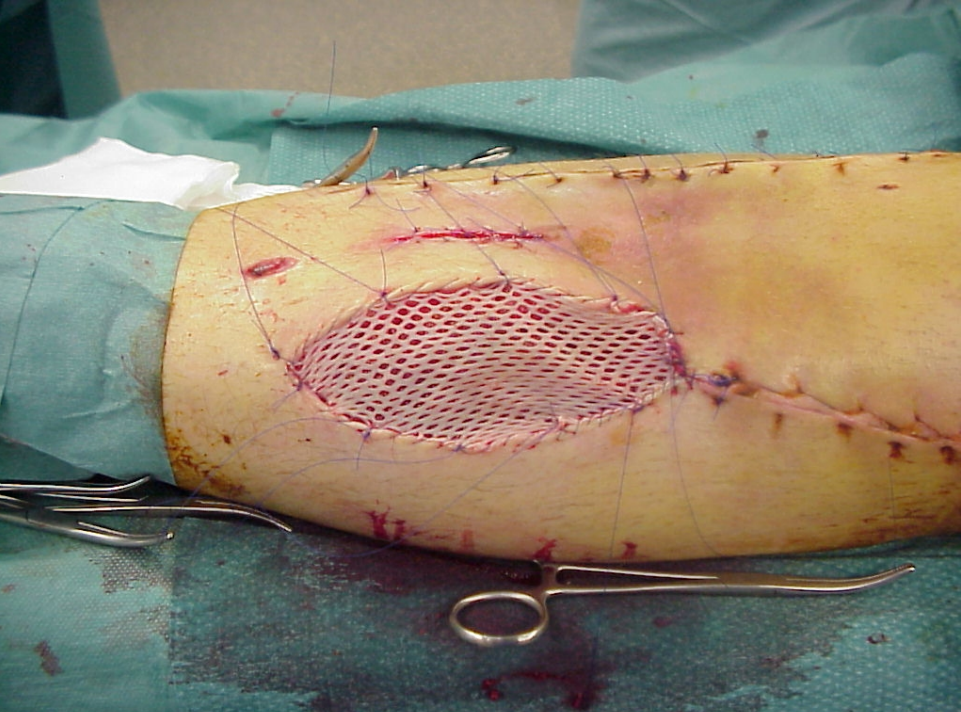
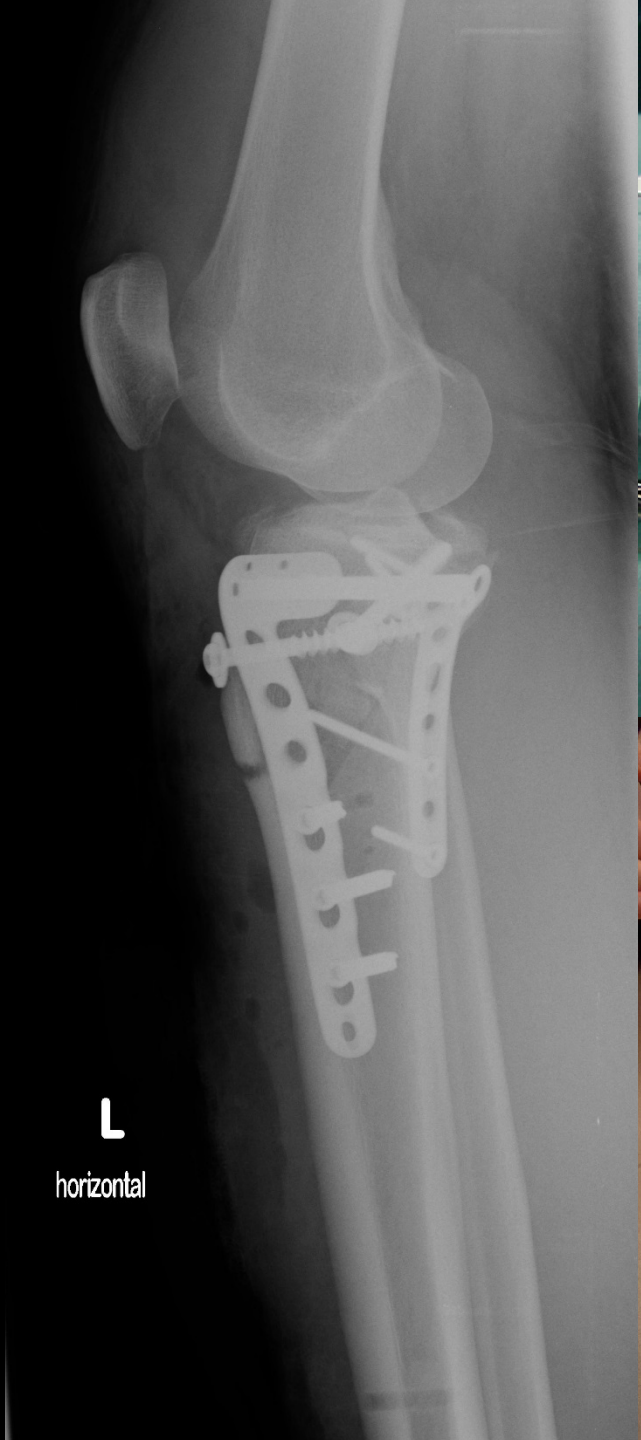


M. T. male, 25y,
sledding



L
horizontal







1 year

„ A large percentage of skiers with surgically treated intraarticular tibial plateau fractures cannot continue to participate in downhill skiing; however, the majority could resume an active lifestyle for several years after trauma“



R.S. 49j, male, ski
...and MTBI



postop I



postop II, 2mt



The anterior triangle
is „moving“ ...5mt



postop III lag screw
at 5mt

R
legend



1 y

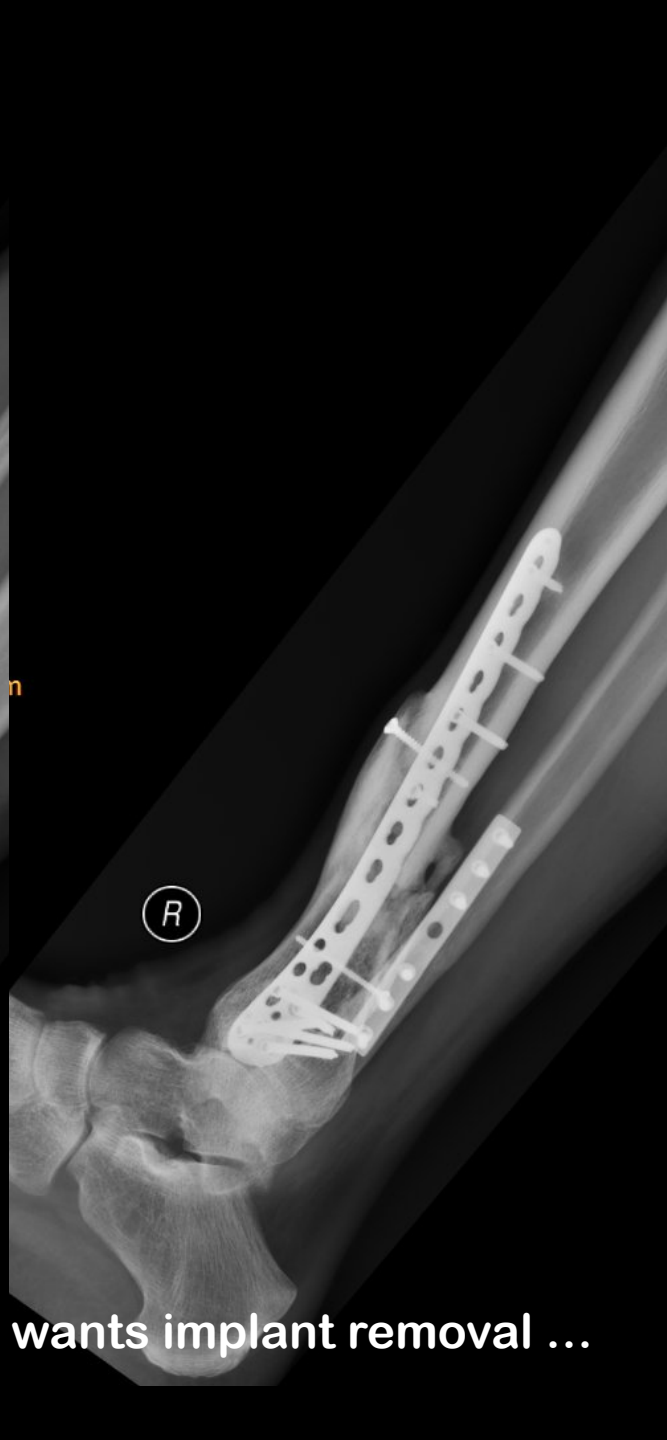


12 mm
└─┘



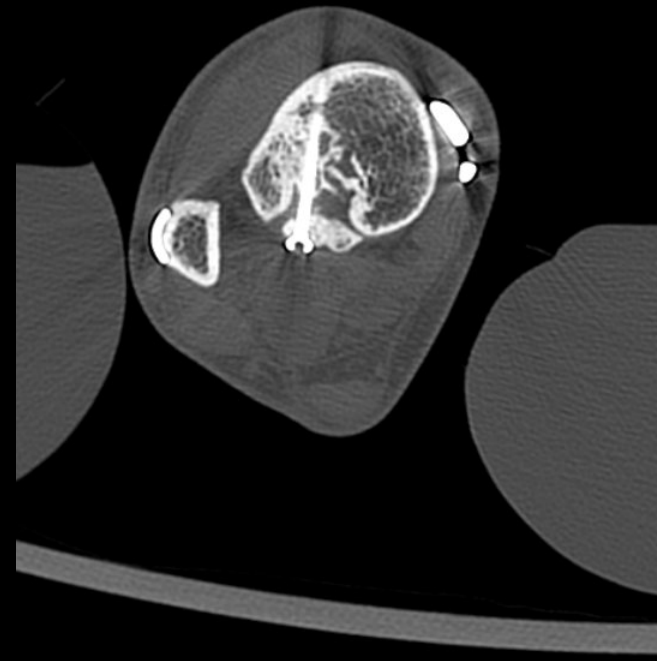
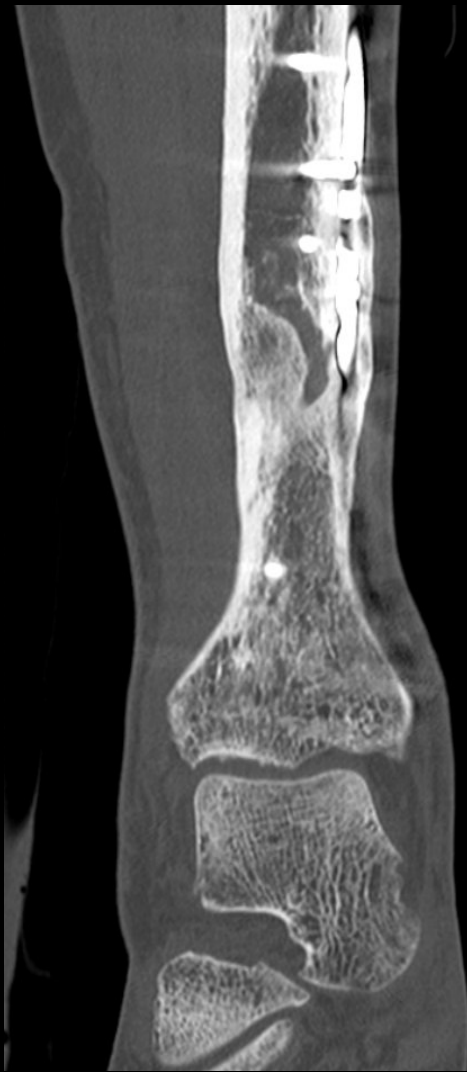
(R)

3y



(R)

wants implant removal ...





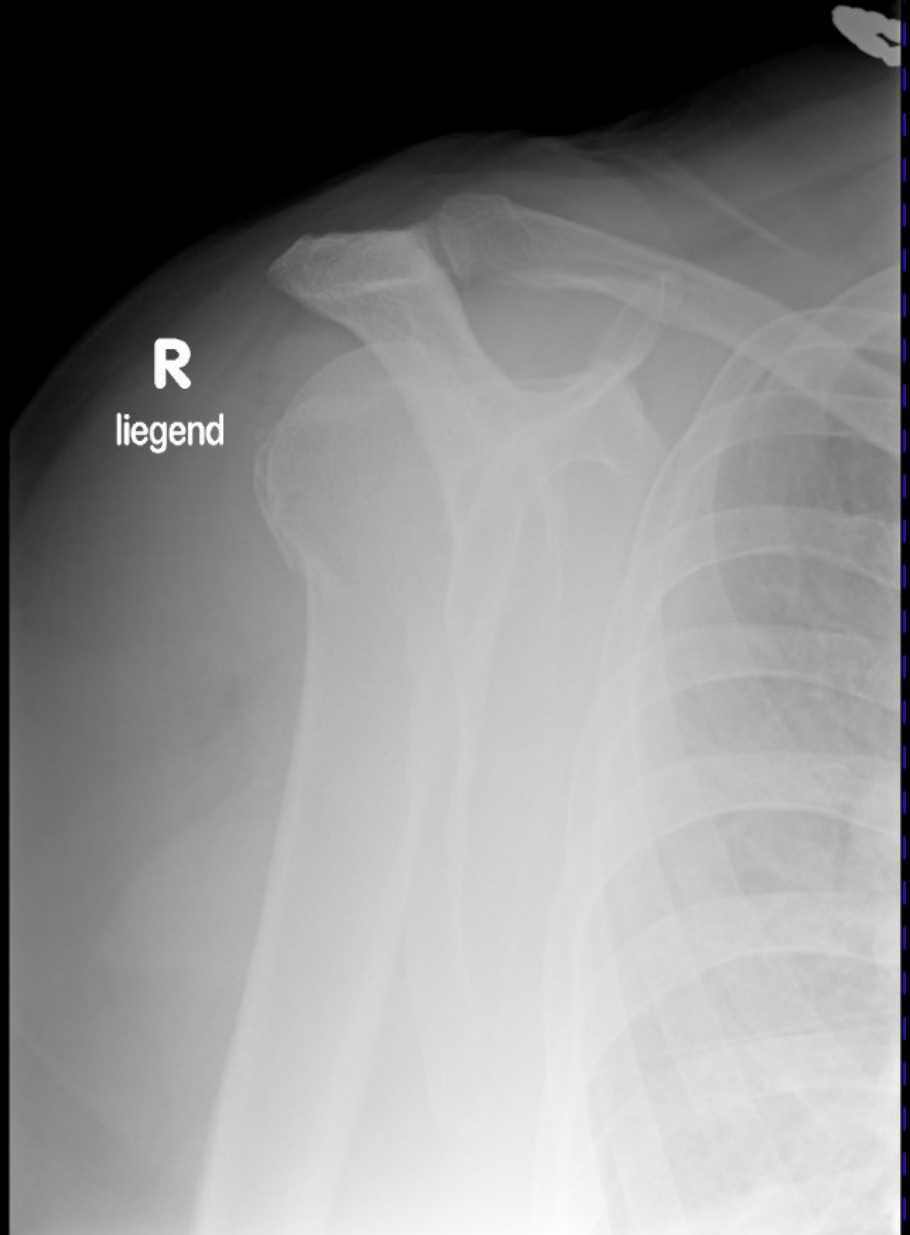
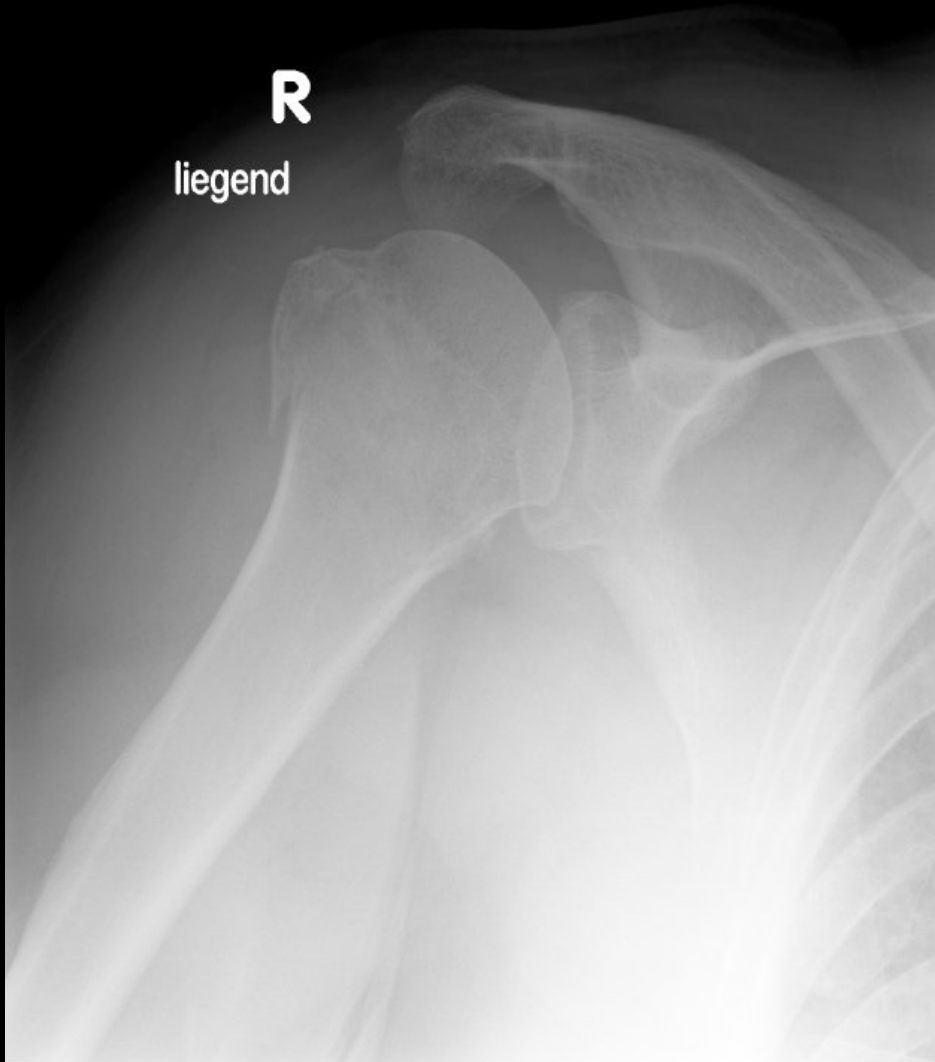
postop IV...

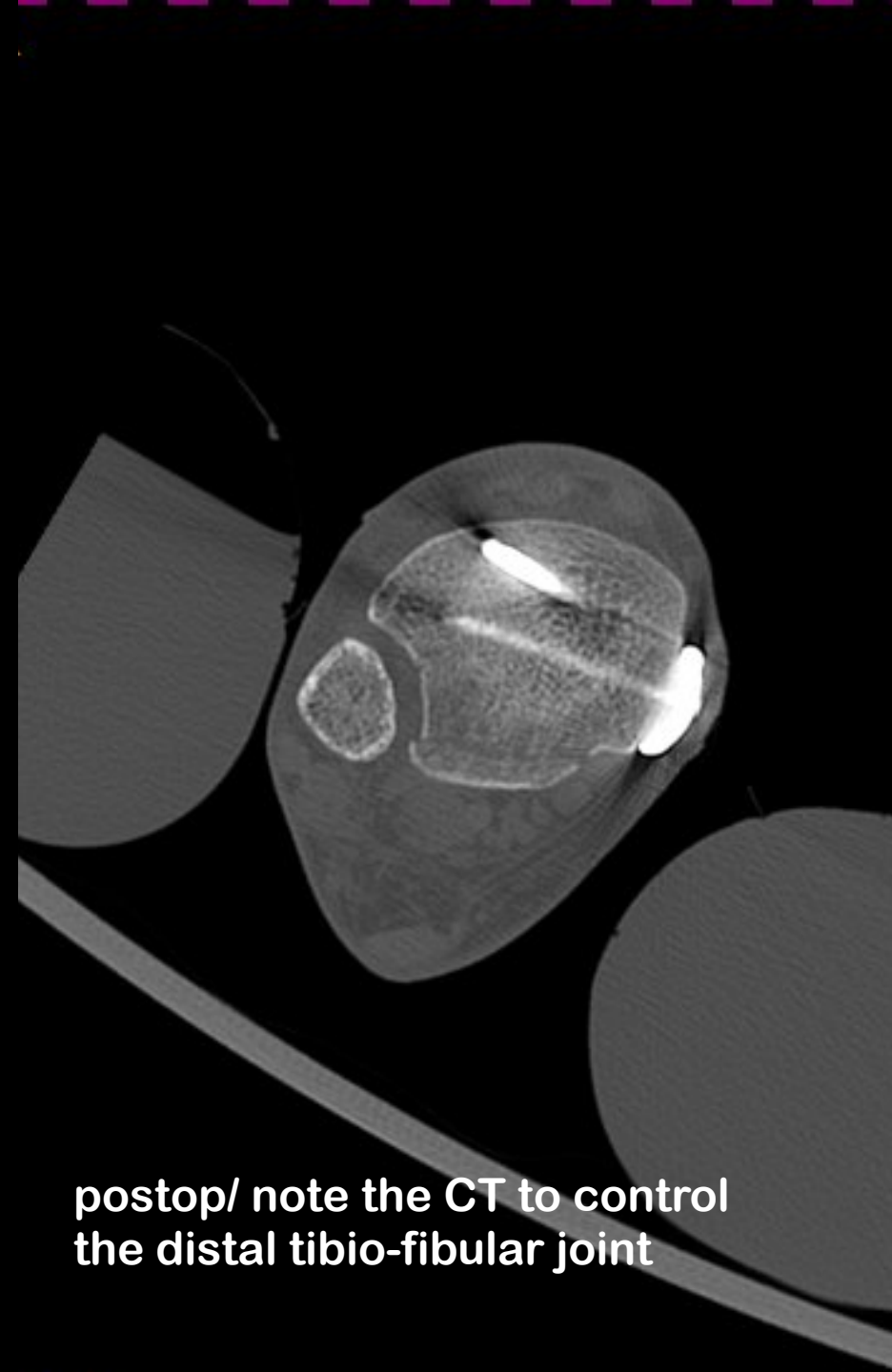
...the end



T.R. male, 58y,
skiaccident









I get by with a little
help from my

friends

- John Lennon

I get by with a little
help from my



- John Lennon



K. St male, 47y, snowboard hard boots

R



R



postop I

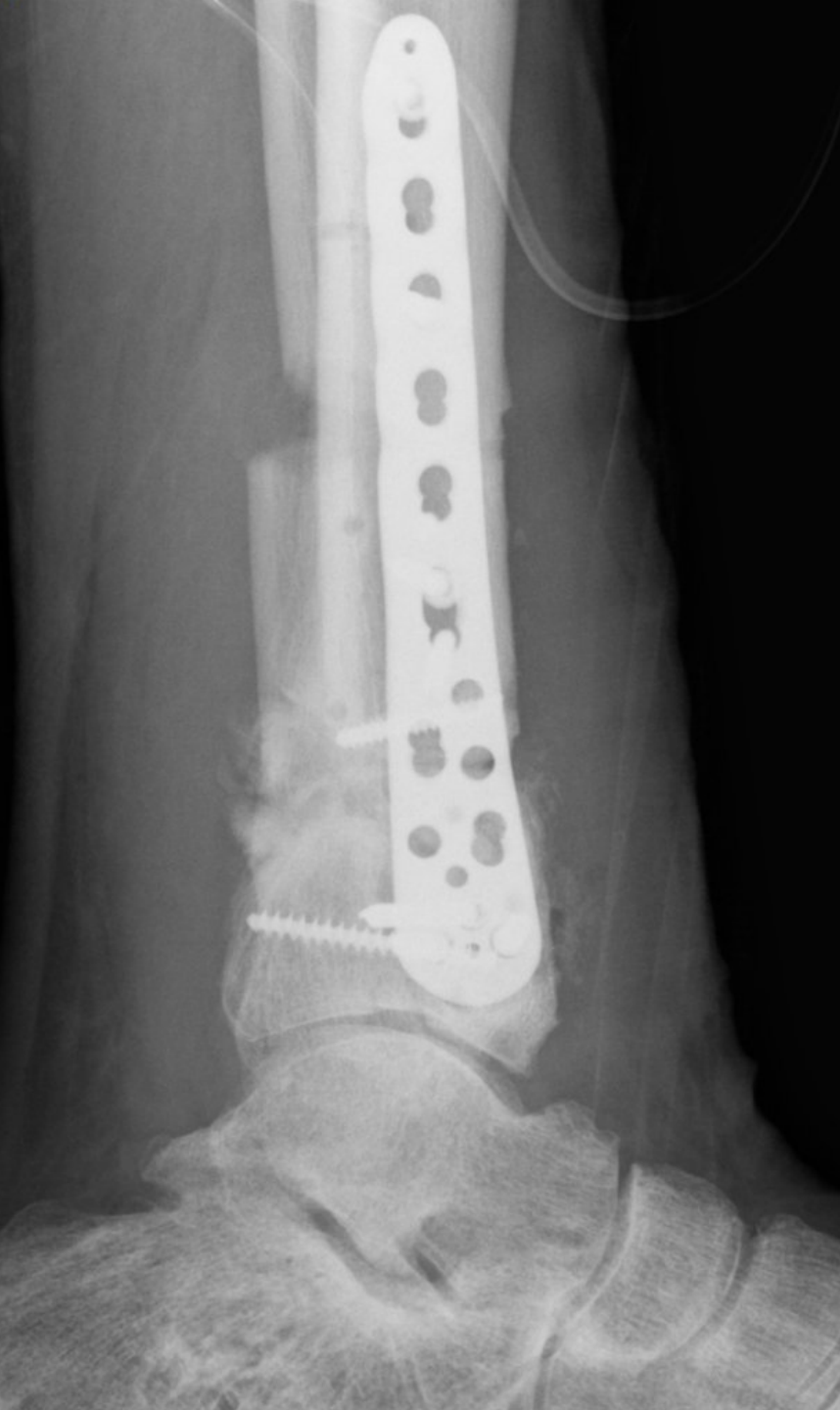
d



8 mt

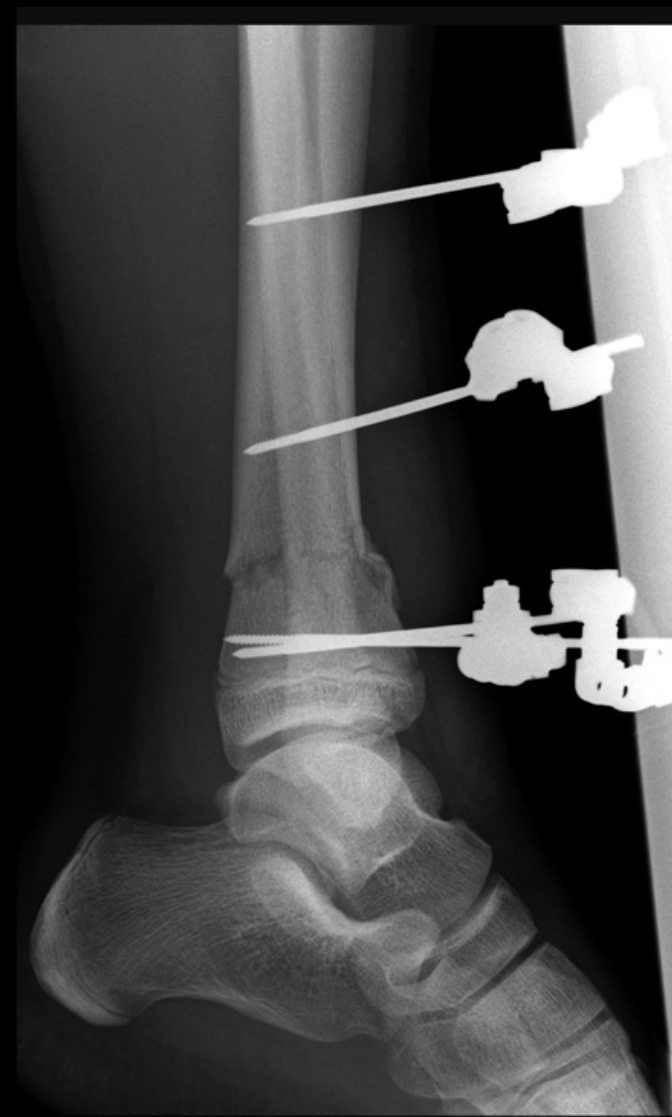


R



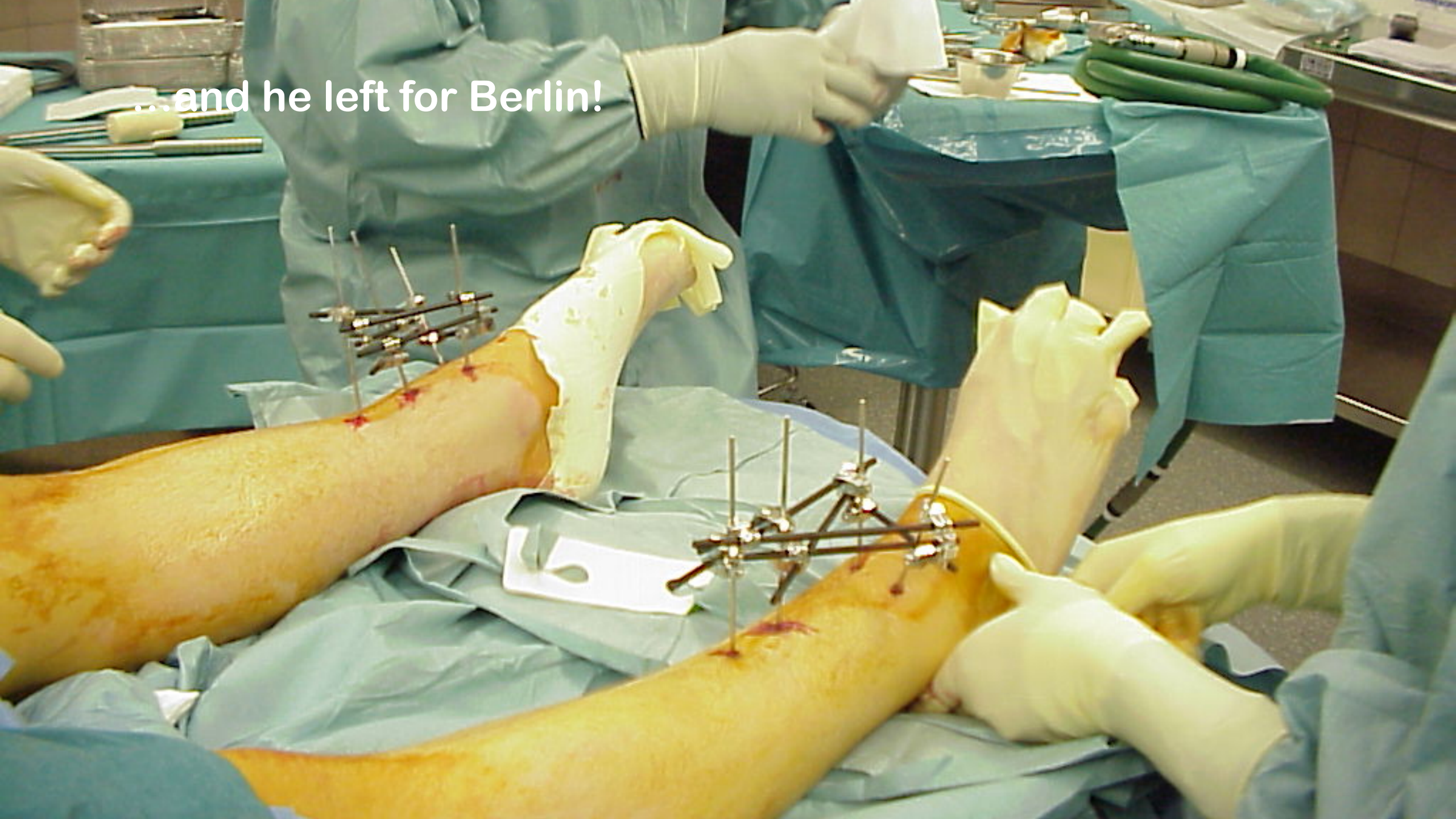


F.A. 13 y, male, sledding



postop both sides

...and he left for Berlin!



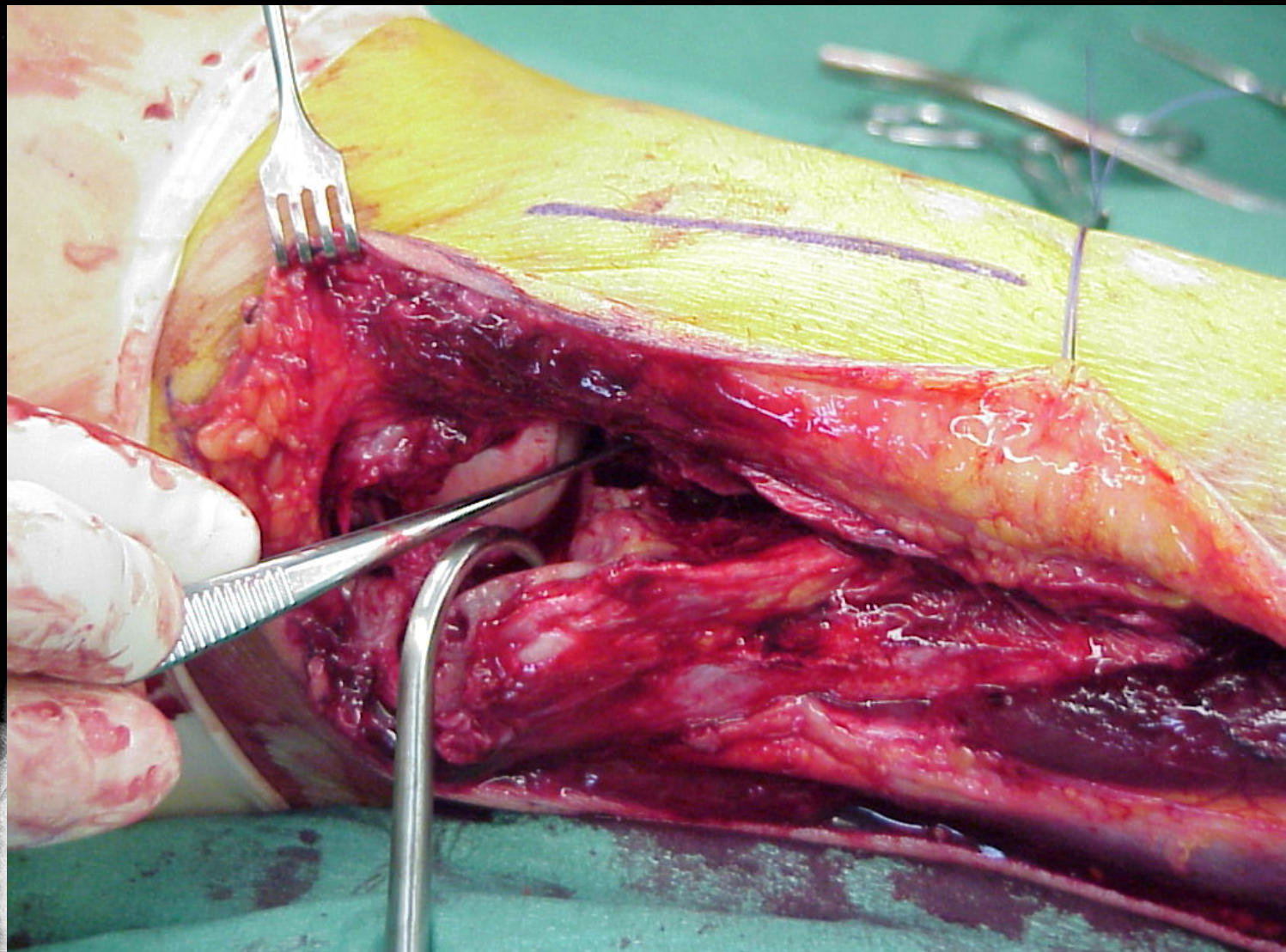


Y.A. 34y, male,
snowboard accident



Ahmet
.1972





...and he went off to Paris!



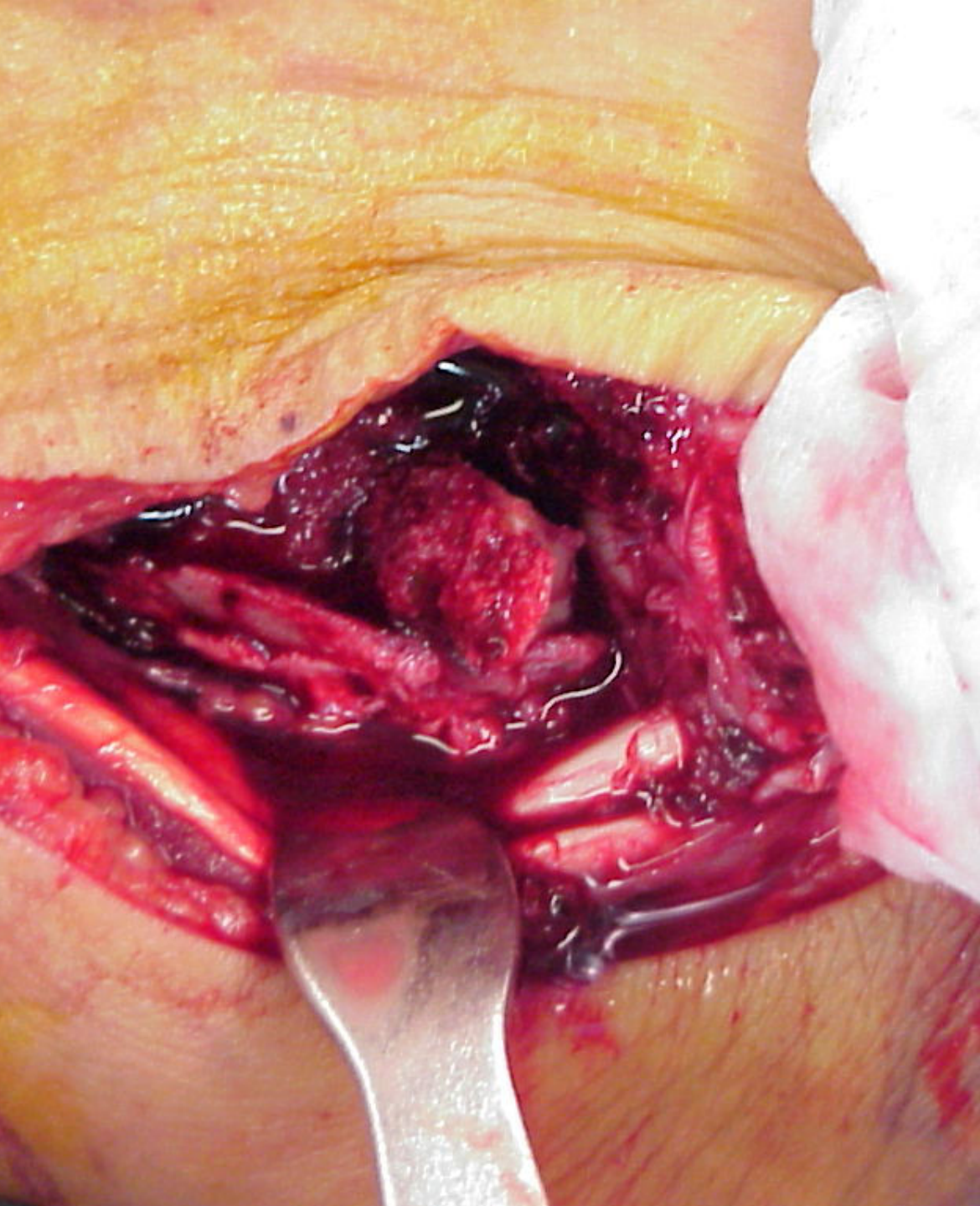
S.S. 48y, female, skiaccident

12 mm





impaction zone posteromedial



postop II

L





Aftertreatment of malleolar fractures following ORIF – **functional compared to protected functional in a vacuum-stabilized orthosis: a randomized controlled trial**

Honigmann P et al. Arch Orthop Trauma Surg 2006

Results:

Vacuum-stabilized orthosis...

- less postoperative swelling**
- faster full weight bearing**
- ability to walk on stairs confidently was shorter**

Indikationen	Stationär	1	2	3	4	5	6	7	8	
AO/Weber A konservativ										
AO/Weber A operativ										
AO/Weber B konservativ										
AO/Weber B operativ unilat										
AO/Weber B operativ bi/trimall										
AO/Weber C konservativ										
AO/Weber C operativ										
Pilonfraktur konservativ										Belastungssteigerung nach Röntgenbefund
Pilonfraktur operativ										Belastungssteigerung nach Röntgenbefund
Calcaneusfraktur konservativ										Belastungssteigerung nach Röntgenbefund
Calcaneusfraktur operativ										Belastungssteigerung nach Röntgenbefund
Achillessehnen konservativ/operativ										
Metatarsale V Basisfraktur konservativ/operativ										Belastungssteigerung nach Röntgenbefund

VACOPedes®

Metatarsalfrakturen (ausser V Basisfraktur) konservativ/operativ										
--	--	--	--	--	--	--	--	--	--	--

Merke: Solange keine Vollbelastung im VACOPed, Thromboseprophylaxe indiziert

Abrollbelastung
 Vollbelastung

Lagerung im VACOSplint stationär/ambulant

Immobilisierung mit 0° Fix-Adapter (dorsal und ventral)

Immobilisierung mit 15° oder 30° Fix-Adapter (dorsal und ventral)

Vacoped ROM Funktionelle Nachbehandlung Freigabe OSG mit 20° plantar Flexion/Extension

Physiotherapie



TOM CRUISE
MISSION: IMPOSSIBLE