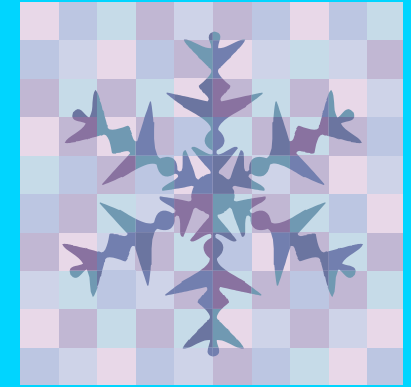
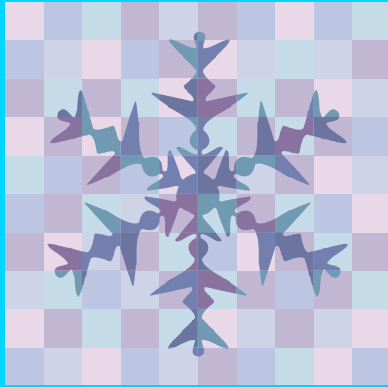



Medical Management in International Ski Events in Austria



Austrian Ski Federation



A winter landscape featuring snow-covered evergreen trees in the foreground and middle ground. The background shows a range of mountains under a bright blue sky with scattered white clouds. The overall scene is serene and cold.

**For being fit for all medical casualties
and requests in an international event
a network of all involved institutions is
necessary**

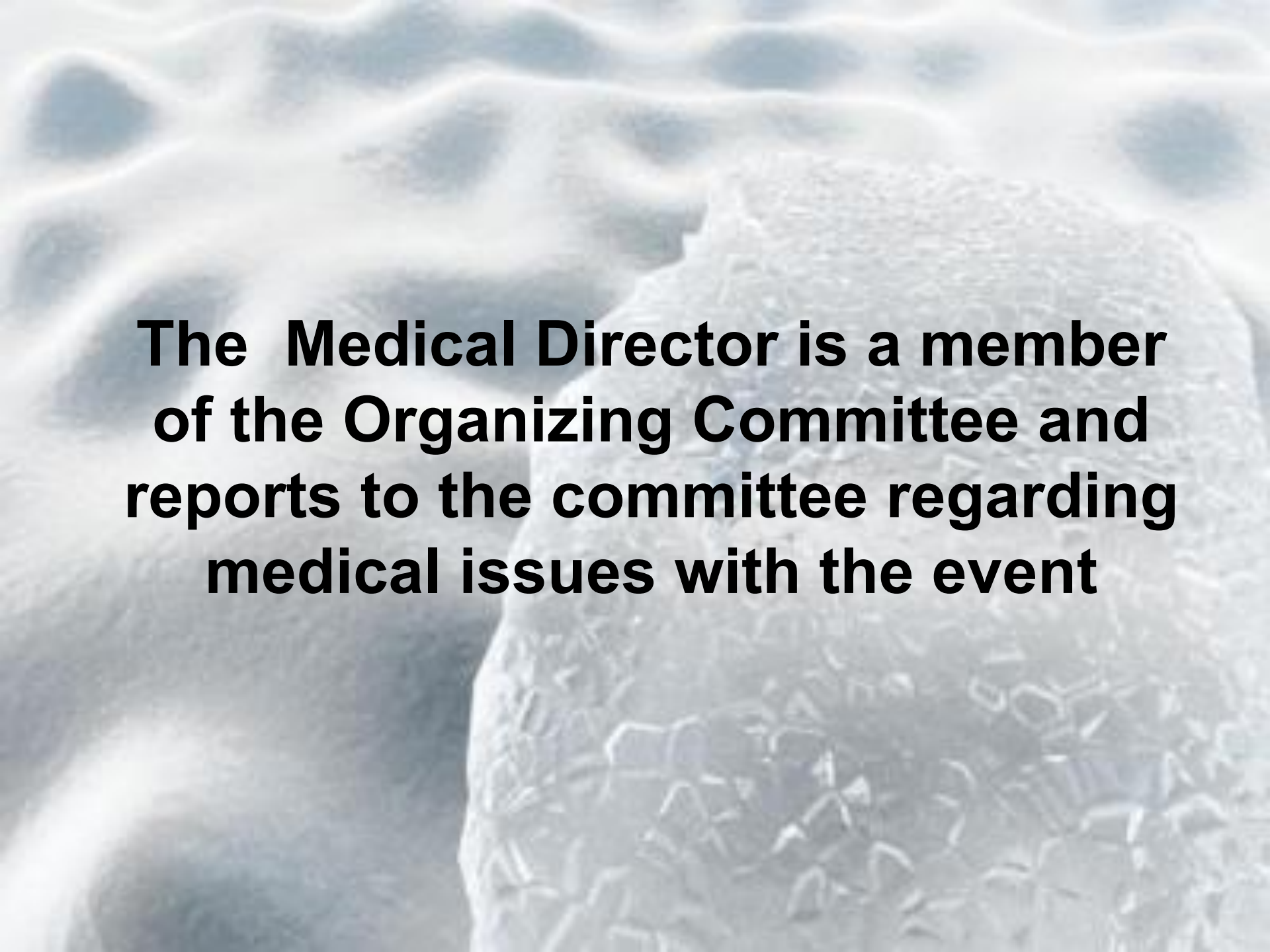
These Institutions are:

- **The Organizing Committee of the Event**
- **The local and national Medical Rescue System**
- **The local and national Medical Services**
- **The local and national Mountain Rescue System**
- **The national police**
- **The military**
- **The medias (press, tv,etc.,)**



Medical Director

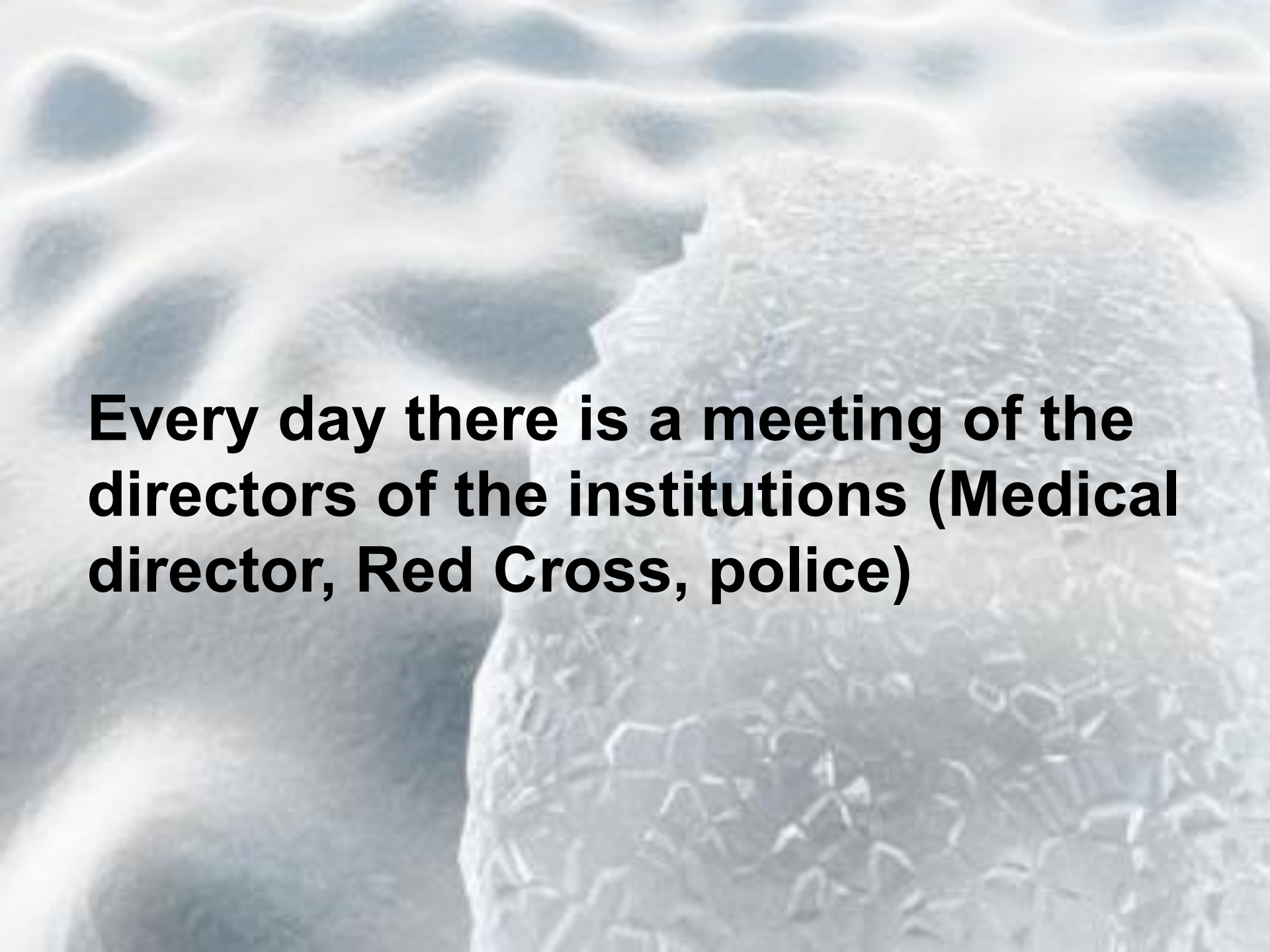
Responsible for all medical requests



The Medical Director is a member of the Organizing Committee and reports to the committee regarding medical issues with the event



It is possible for the Medical Director to communicate with all above mentioned institutions



Every day there is a meeting of the directors of the institutions (Medical director, Red Cross, police)

During large sport events part of the staff of central hospitals is responsible for communication with the Medical director and his staff (MRI, Drugs, etc)

**The medical director and his staff
are the centre for communication
with the local medical staff and with
the hospitals and doctors**



Ambulances

**3 to 12, in catastrophic
situations up to 100**



Minimum 1 helicopter



Courses



Ski patrol unit



Two ski patrollers (paramedics), 1 medical doctor, 1Akja (Toboggan)



The ski patrollers are very experienced in transportation of patients on ski courses and in managing even severe injuries

The ski patrollers are equipped with a “trauma package” including

- gloves
- bandages
- pocket masks
- oxygen and tubing
- oral airways, bag valve mask
- bandages
- straps



The medical doctor is an emergency doctor (mainly an anaesthesiologist)

Doctors bag is equipped with laryngoscope, nasotracheal tubes, orotracheal tubes, bag valve mask and bag.

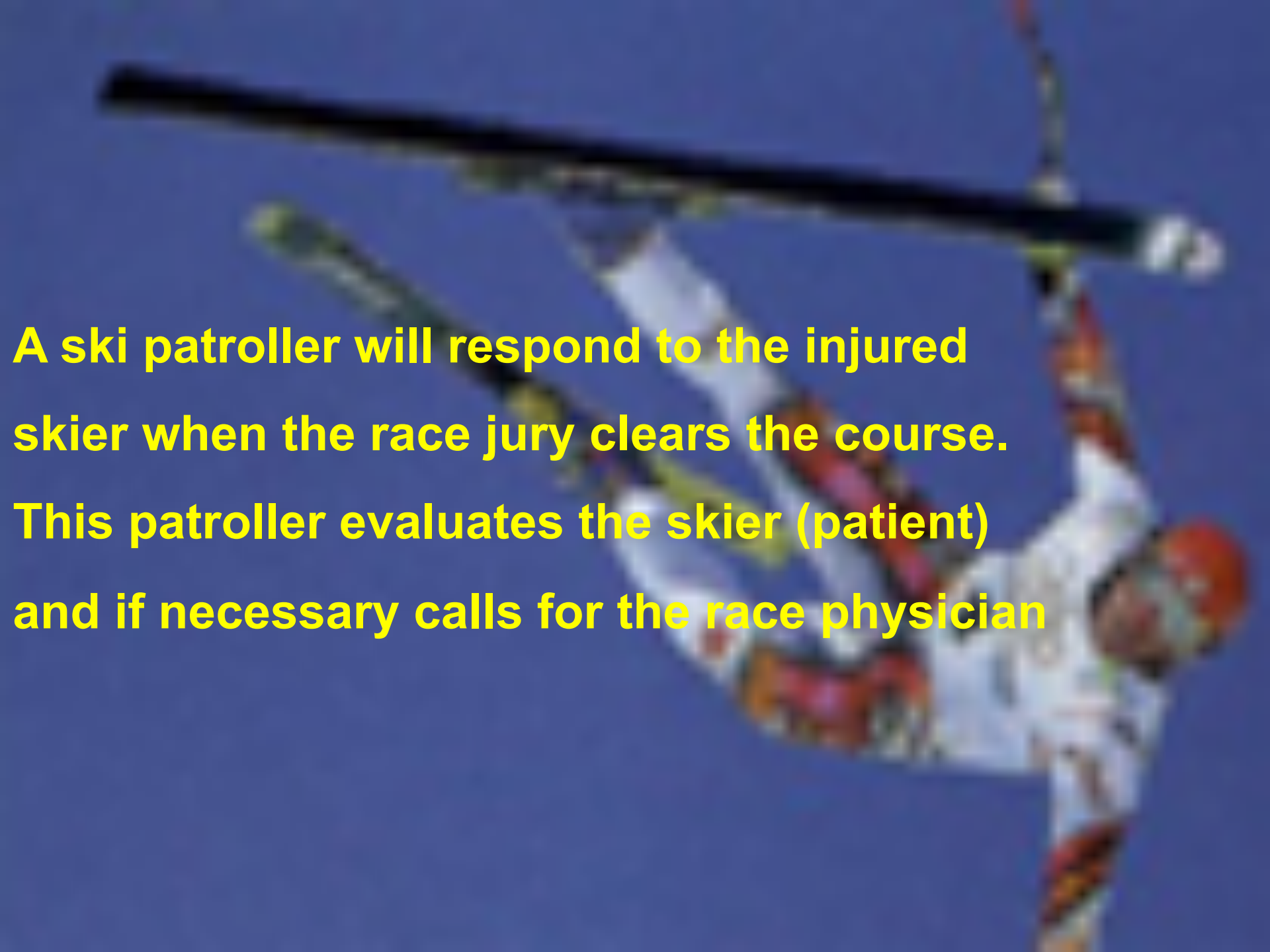
Supplies for intravenous and intravenous fluid.

Medications.

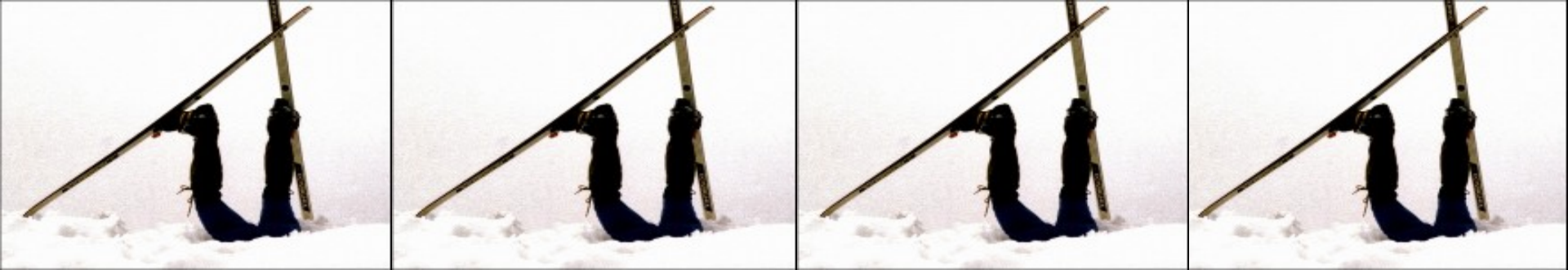
Equipment location issue: The above equipment does not work well when kept out in the cold and there is a trade off between being “on course” and it being kept warm



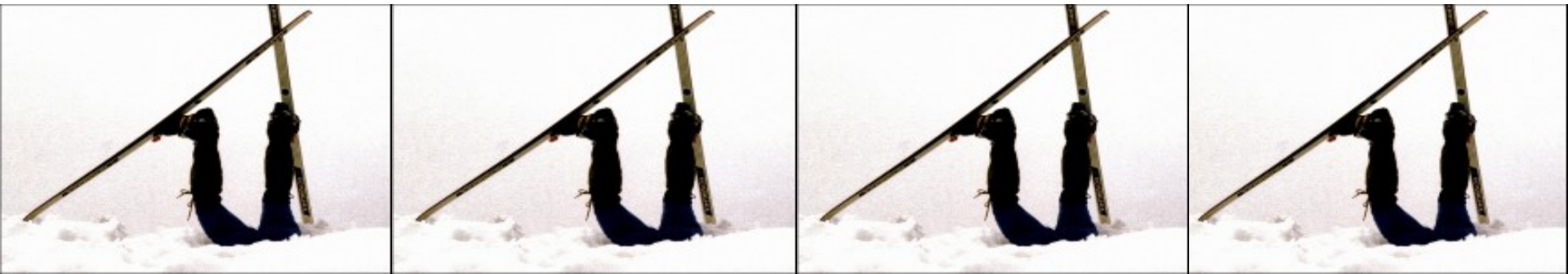
Evaluation and stabilization

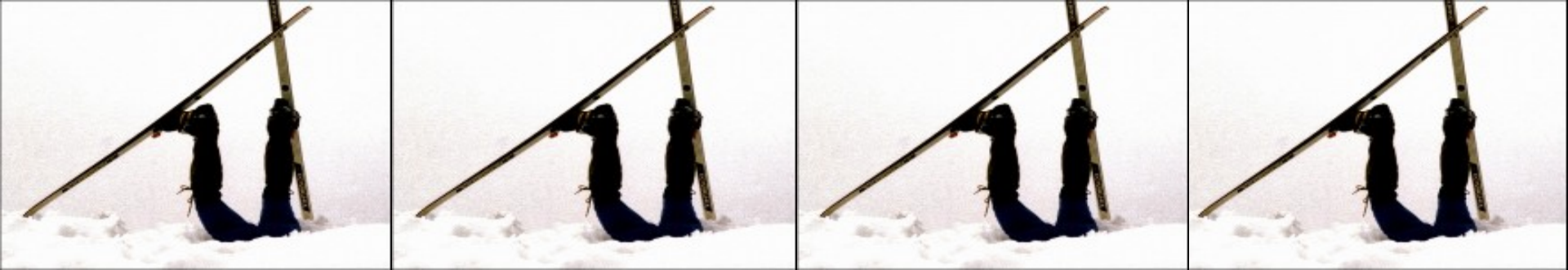


A ski patroller will respond to the injured skier when the race jury clears the course. This patroller evaluates the skier (patient) and if necessary calls for the race physician

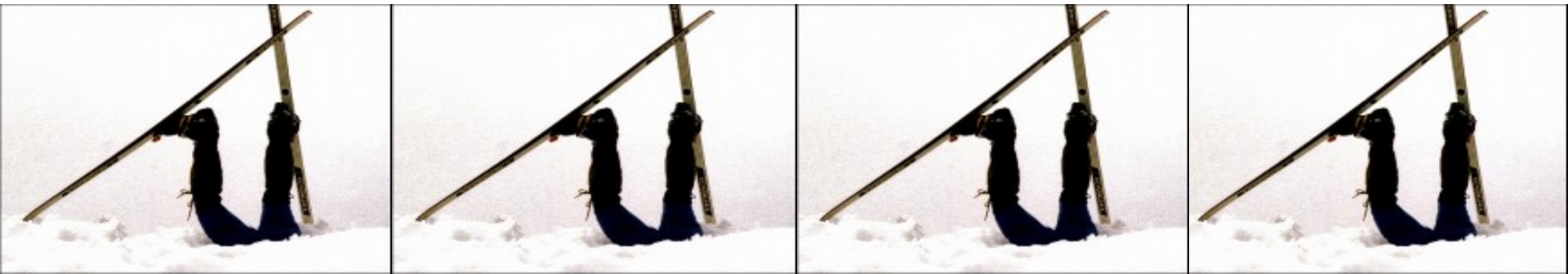


The race physician and the patrollers have to treat life threatening injuries on the scene. However definitive care will not be delayed





Team physicians on the race course should allow initial evaluation, stabilization and evacuation to be preformed by the race physician and the ski patrol



They are welcome to assist, interpret (if language barriers) and to treat isolated extremity injuries after the patient has been transported to a treatment area or mini clinic near the race course



Evacuation off the ski area





The safety of the patient, course workers patrollers and spectators is paramount

DDr. Wicker





The evacuation off the racecourse and ski hill is the responsibility of the ski patrol





Isolated extremity injuries such as arms, knees and ankles will be transported by the ski patrol via akja (toboggan) to the waiting ambulance or patrol room



Multi-system trauma, head injuries, spinal injuries and femur injuries may be taken to a landing zone or will be kept directly by the helicopter by a rope-rescue. The landing zones will be predetermined along the race course



In the race event (weather conditions, eg) there is no helicopter or ambulance at the ski area, the patient may be taken to the patrol room or athlete first-aid station for warmth and further medical care as deemed appropriate by the race physician



Medical locations - maps



Medical staff - phone numbers



Medical meetings time & place



Base Medical Station



Finish Area Medical Locations



Ambulance location

Level I injuries

Minor – strains/sprains



Level II/III – moderate – stable

**Concussion/stable fractures/knee, ligament/
shoulder**



**Level IV Injuries – life threatening – closed head/
internal
trauma/unstable**





Radio communication record



Anti Doping Control Station

Thank you for your attention

