

This time is a risky time for skiing!





accident around 6pm.  
Fell into a river while  
skiing after having had a  
few beers



postop I

postop  
II



1 year

**the last run does  
not take place!**



Berner Oberländer Helikopter AG

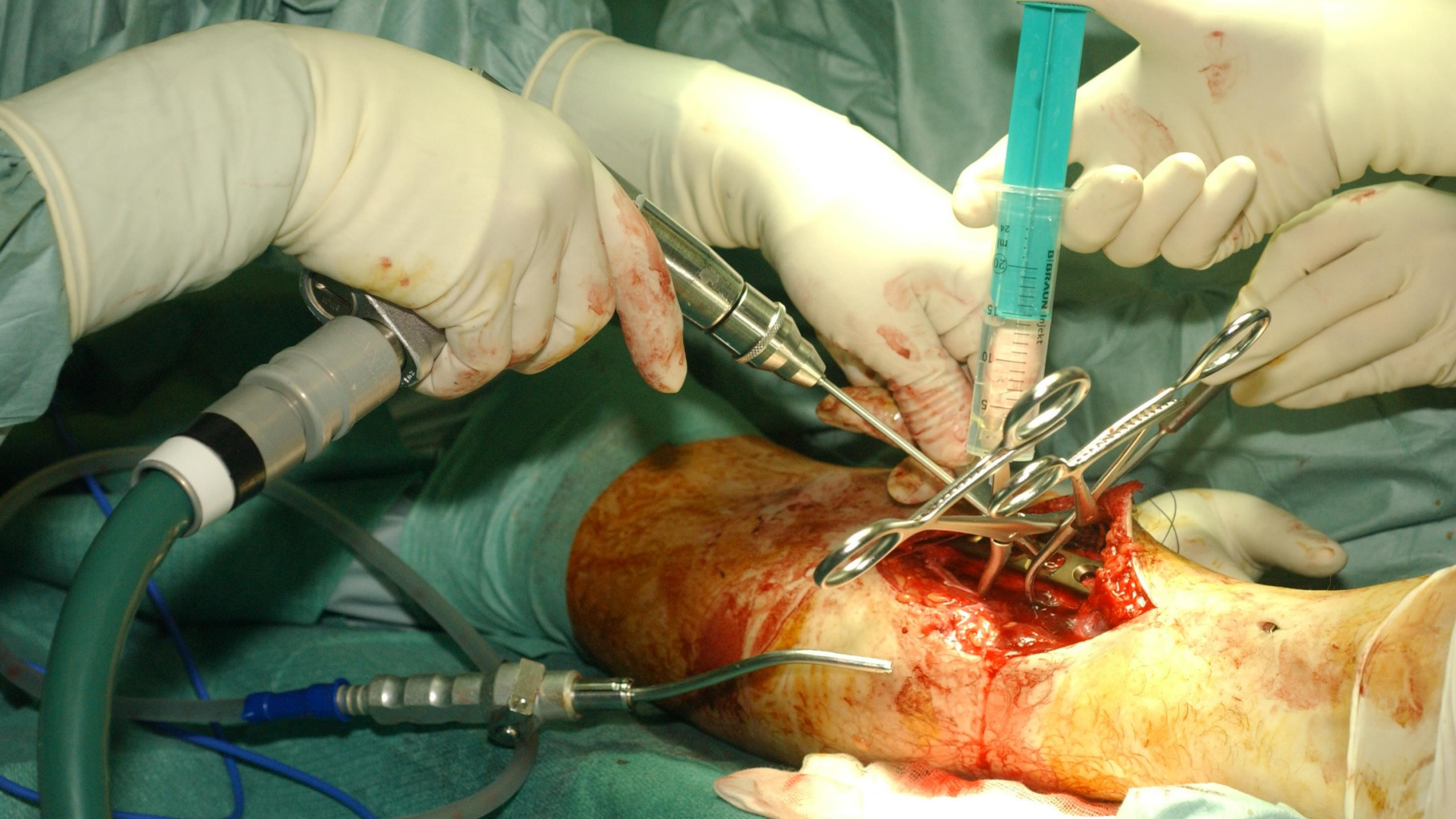
arzt

BOHAG

"SILBERHORN"

arrival at 2 pm



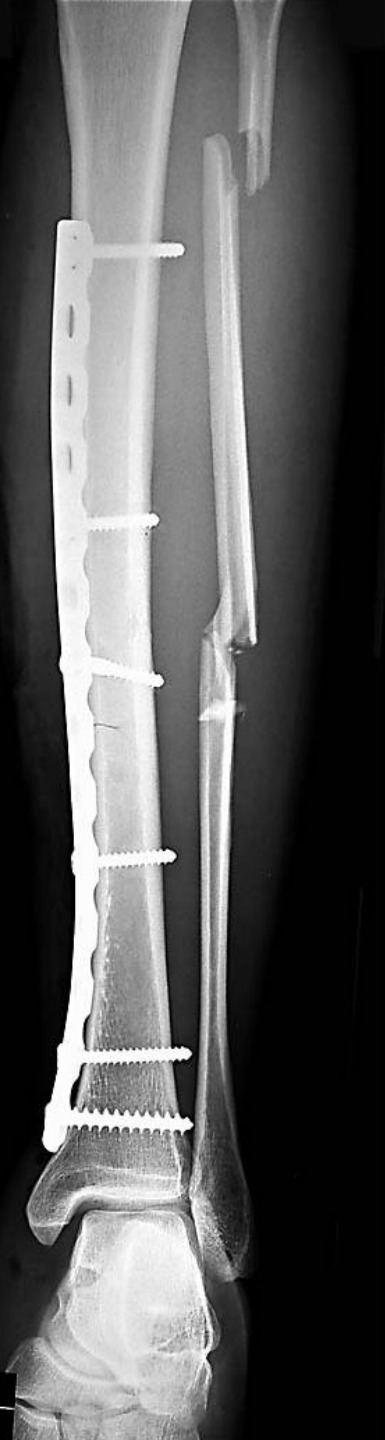


postop

L

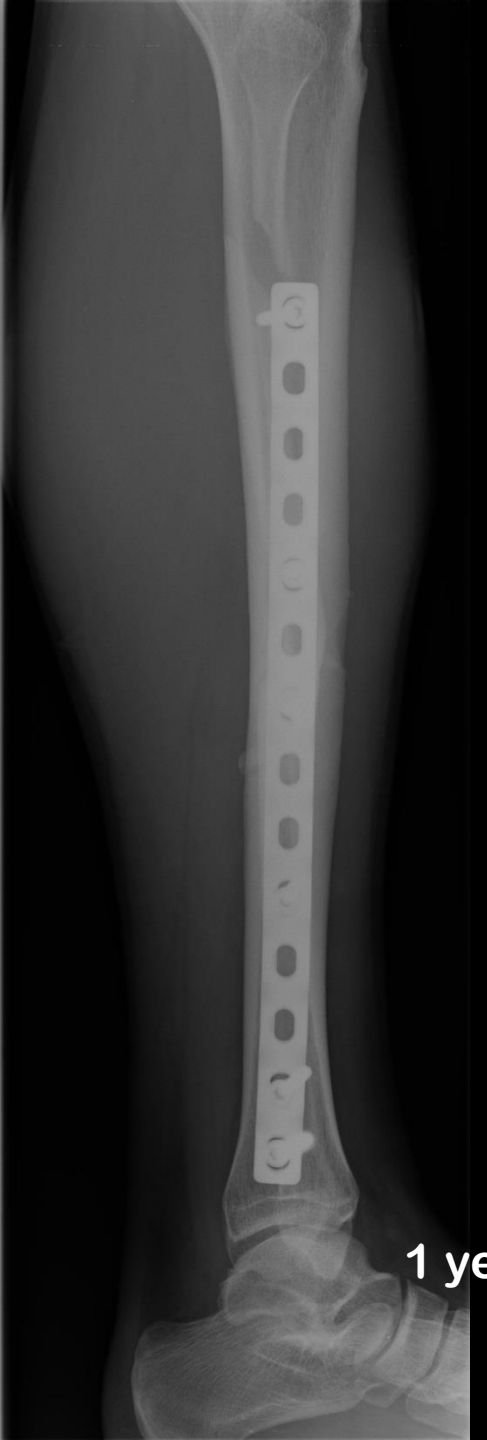
EFAN

2005 [08:47]  
8 AP SO



L  
legend

1 year





**many people in the morning?**



**just a few people at noon?**

At 11 o'clock many accidents happen. Don't risk too much!



**suvaliv**

Sichere Freizeit

at 3 pm many accidents happen. Don't risk too much!

**suvaliv**

Sichere Freizeit





1.25m

KINDER NUR IN BEGLEITUNG  
ENFANTS ACCOMPAGNÉS  
CHILDREN MUST BE  
ACCOMPANIED BY AN ADULT  
BAMBINI ACCOMPAGNATI

### Betriebszeiten / Horaires

Betrieb ab  
En service  
à partir de **9.00**

Letzte Fahrt  
Dernière course **16.30**

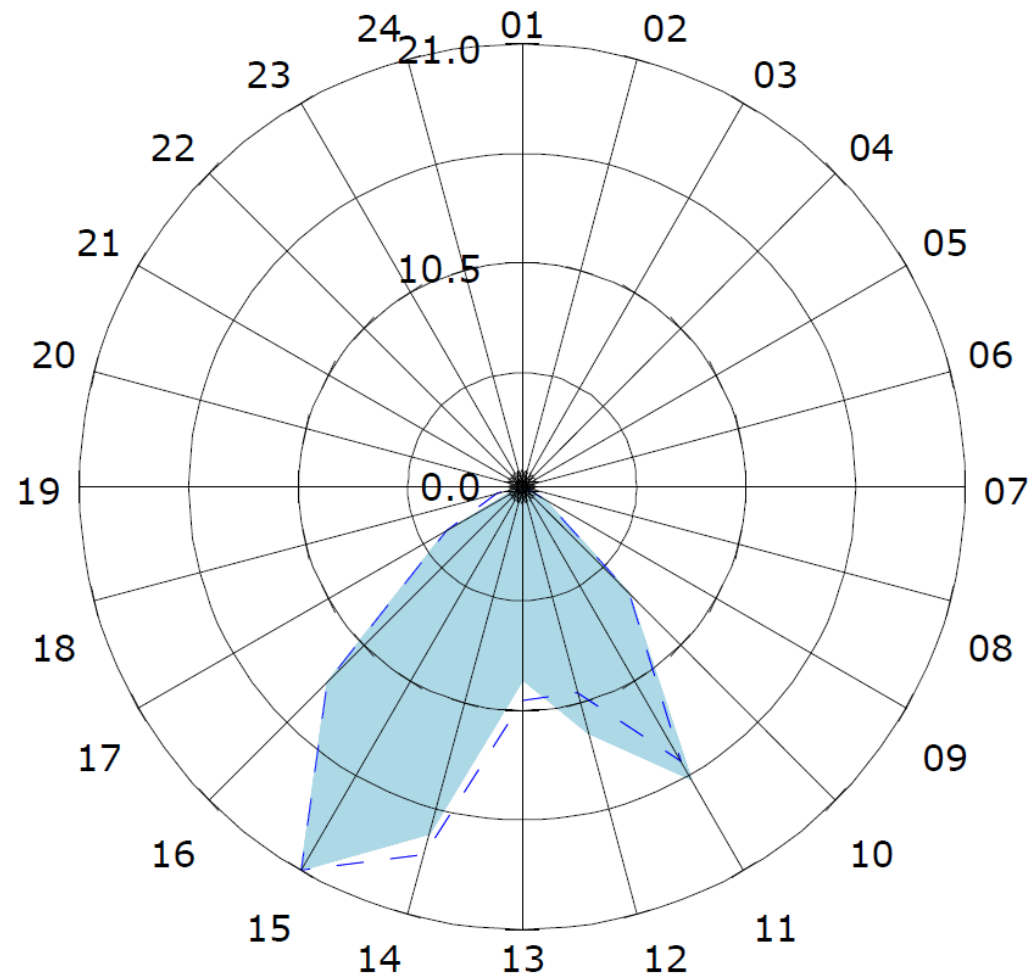
Letzte  
Pistenkontrolle  
Dernier contrôle  
de piste **16.30**



At 3 p.m many  
accidents happen.  
Don't risk too much!

suvaliv  
Swiss Travel





Kollektiv    ■ NBUV Ski    □ NBUV Snowboard

Quelle: UVG-Statistik, NBUV & UVAL, 2008-2012 Hochrechnung aus Stichprobe



**start early, have  
a long lunch and  
leave late!**